

ASSESSMENT DAY

College of Business, Engineering and Technology

School of Business – AS/CCC

February 8, 2021

Strengths

Challenges

Recommendations

Academic Assessment

	LEVEL	FOCUS	CONDUCTED BY	FREQUENCY
Academic Success Committee	Program	<ul style="list-style-type: none"> Quality of assessment practices 	Committee of peers	Years 1 & 2
Instructional Program Review	Program / Cluster	<ul style="list-style-type: none"> Enrollment, retention, completion Industry certifications and job placement Program budget and staffing Advisory committees Curriculum changes 	Committee of peers	Year 3
Assessment Day	Course/ Program	<ul style="list-style-type: none"> Enrollment by demographics Graduation and retention Average class size Course success rate Placement rate SLOs, PLOs and ILOs 	Program Chair and Faculty	Years 1, 2, 3

Programs – Certificates and 2 Year Degree Programs

[2084 - Accounting Technology](#)

[0943 - Accounting Technology Management](#)

[0935 - Accounting Technology Operations](#)

[0824 - Broadcast TV Production](#)

[2233 - Broadcast TV Production](#)

[2059 - Business Administration](#)

[0916 - Business Management](#)

[0913 - Business Operations - Entrepreneurship](#)

[2221 - Industrial Management Technology \(Limited Access Program\)](#)

[0817 - Marketing, Sales and Service - Entrepreneurship](#)

[2229 - Office Administration \(General, Legal or Medical Specializations\)](#)

[0914 - Office Management](#)

[0926 - Office Support \(Technical Certificate\)](#)

[2062 - Paralegal Studies \(Legal Assisting\)](#)

[300500 - Project Management Certificate](#)

[0979 - Television Studio Production](#)

[2059 - Business Administration-\(Risk Management and Insurance Specialization\)](#)

Action Items from Last Assessment Day

Certificates and 2 Year Degree Programs Assessment Day: 02/10/2020

- (From 18-19) Anita and Karla to get together and see possibility to combined A.S. and certificates outcome assessment;
- Focus on programs in CTE audit;
- Auto graduation for embedded certificates;
- Review pre- and co-reqs for 20-21 catalog;
- SLO examples of improvement/challenges discussion at next assessment day

Program Learning Outcomes

AS Business Administration #2059

1. Generate effective communication of ideas, concepts and terminology.
2. Identify legal and ethical concerns and demonstrate social responsibility in business situations.
3. Explain how economic theories impact businesses and consumers.
4. Interpret and apply business related theories and technology to problems, cases, or research papers.
5. Utilize appropriate software and prepare applicable business documentation.
6. Create and analyze financial information for management related decisions.
7. Formulate a marketing plan for a company that incorporates marketing concepts.
8. Develop a business plan for a new business venture.

Business Management Certificate #0916

1. Prepare financial information for management-related decisions.
2. Generate effective communication of ideas, concepts and terminology.
3. Apply business related theories to problems, cases, or research papers.
4. Create business documentation using appropriate software.
5. Formulate a company marketing plan using marketing concepts.
6. Develop a business plan for a new business venture.

Program Learning Outcomes

Business Operations – Entrepreneurship Certificate #0913

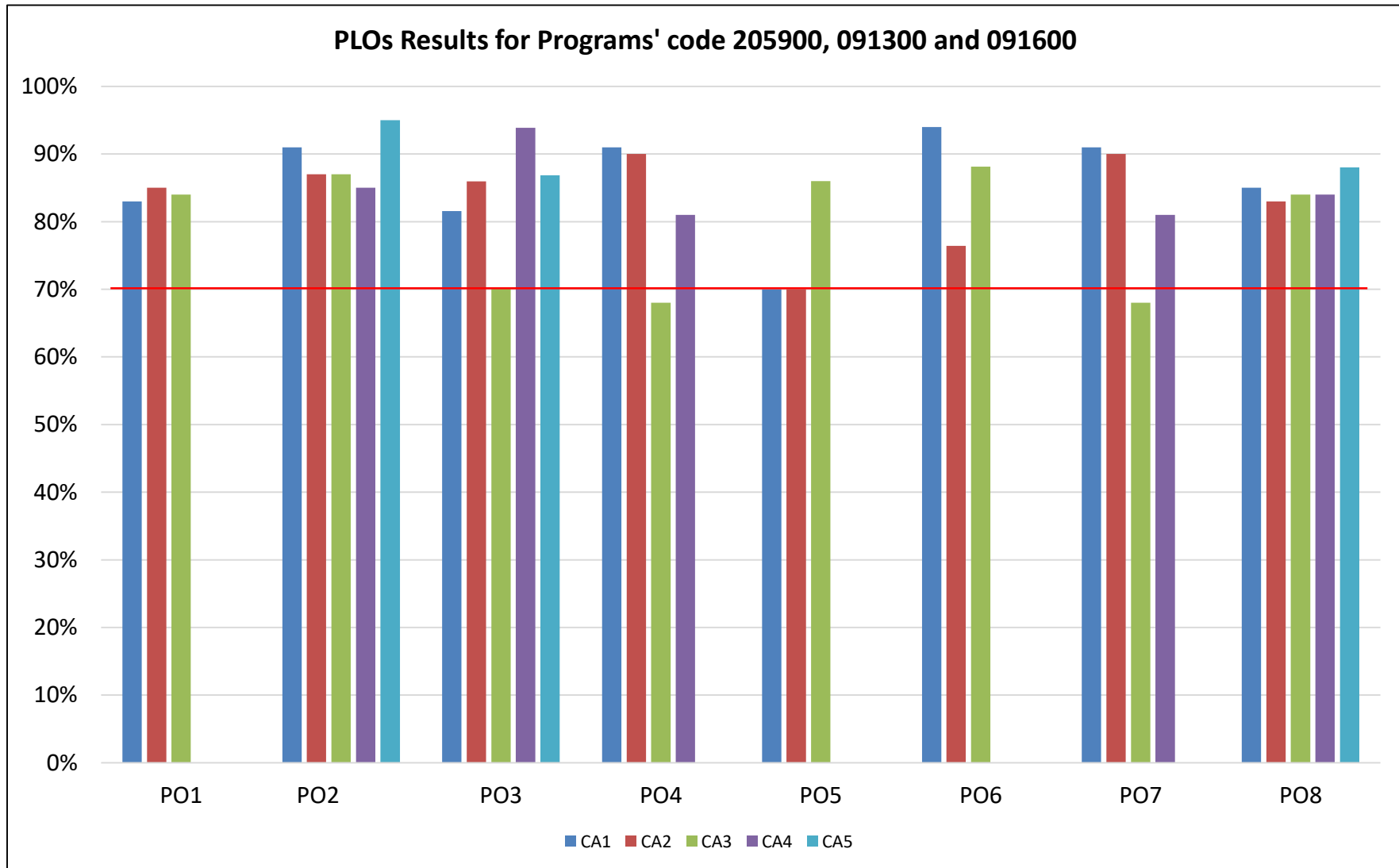
1. Prepare financial information for management-related decisions.
2. Generate effective communication of ideas, concepts and terminology.
3. Apply business related theories to problems, cases, or research papers.
4. Create business documentation using appropriate software.
5. Formulate a company marketing plan using marketing concepts.
6. Develop a business plan for a new business venture.

Marketing, Sales and Service - Entrepreneurship, A.S. Certificate #0817

Graduates of the program will be able to:

1. Identify various marketing strategies or service techniques.
2. Demonstrate effective communication via marketing strategy.
3. Plan the components of a marketing strategy.
4. Develop a business plan.

Program Learning Outcome Assessment Results – 2019-2020



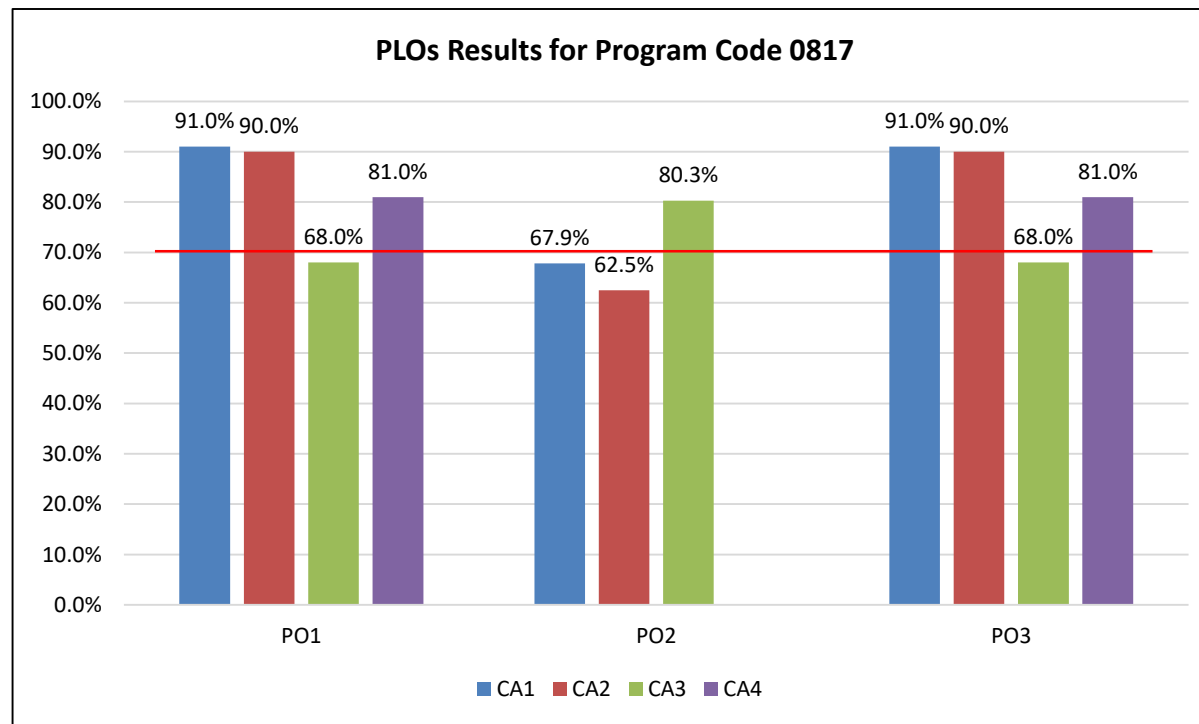
CA: Critical Assignment

Program Learning Outcome Assessment Results – 2019-2020

Sales Entrepreneurship Certificate #081700

Graduates of the program will be able to:

1. Create a project for an organization that incorporates marketing research and concepts.
2. Differentiate social media marketing platforms, options and their beliefs to organizations.
3. Plan and organize a sales presentation.
4. Identify methods for evaluating the effectiveness of various advertising media.



CA: Critical Assignment

Program Learning Outcomes

AS Accounting Technology #208400

1. Demonstrate clear and effective communication
2. Solve business problems using critical thinking.
3. Identify and discuss legal and ethical issues in tax preparation, financial planning, and the business environment.
4. Use appropriate software and hardware to produce tax returns, financial plans, and financial reports.
5. Demonstrate a basic working knowledge of estate planning, investment planning and cash management.
6. Apply Generally Accepted Accounting Principles to record, summarize, and report business transactions.
7. Demonstrate an understanding of corporate finance in the field of business.
8. Identify sound measures of internal control and protection of business assets.
9. Demonstrate an understanding of the global business environment.

Program Learning Outcomes

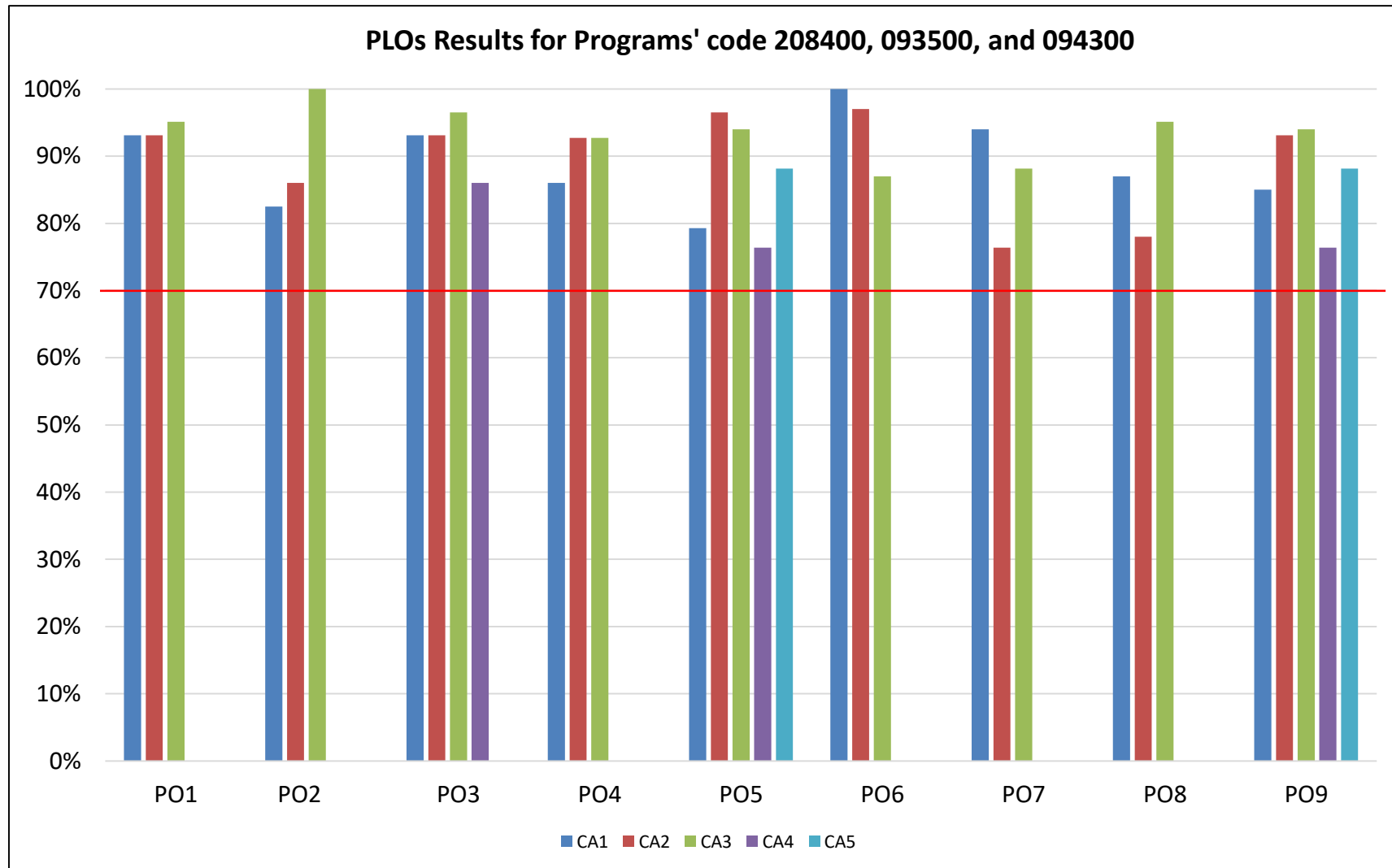
Accounting Technology Operations – Tax Preparation - #093500

1. Demonstrate clear and effective communication
2. Solve business problems using critical thinking.
3. Identify and discuss legal and ethical issues in tax preparation, financial planning, and the business environment.
4. Use appropriate software and hardware to produce tax returns, financial plans, and financial reports.
5. Demonstrate a basic working knowledge of estate planning, investment planning and cash management.
6. Apply Generally Accepted Accounting Principles to record, summarize, and report business transactions.

AS Certificate – Accounting Applications/Computerized #094300

1. Demonstrate clear and effective communication
2. Solve business problems using critical thinking.
3. Identify and discuss legal and ethical issues in tax preparation, financial planning, and the business environment.
4. Use appropriate software and hardware to produce tax returns, financial plans, and financial reports.
5. Demonstrate a basic working knowledge of estate planning, investment planning and cash management.
6. Apply Generally Accepted Accounting Principles to record, summarize, and report business transactions.
7. Demonstrate an understanding of corporate finance in the field of business.

Program Learning Outcome Assessment Results – 2019-2020



CA: Critical Assignment

*: Results given for students that completed the course (No Ws or FNs included)

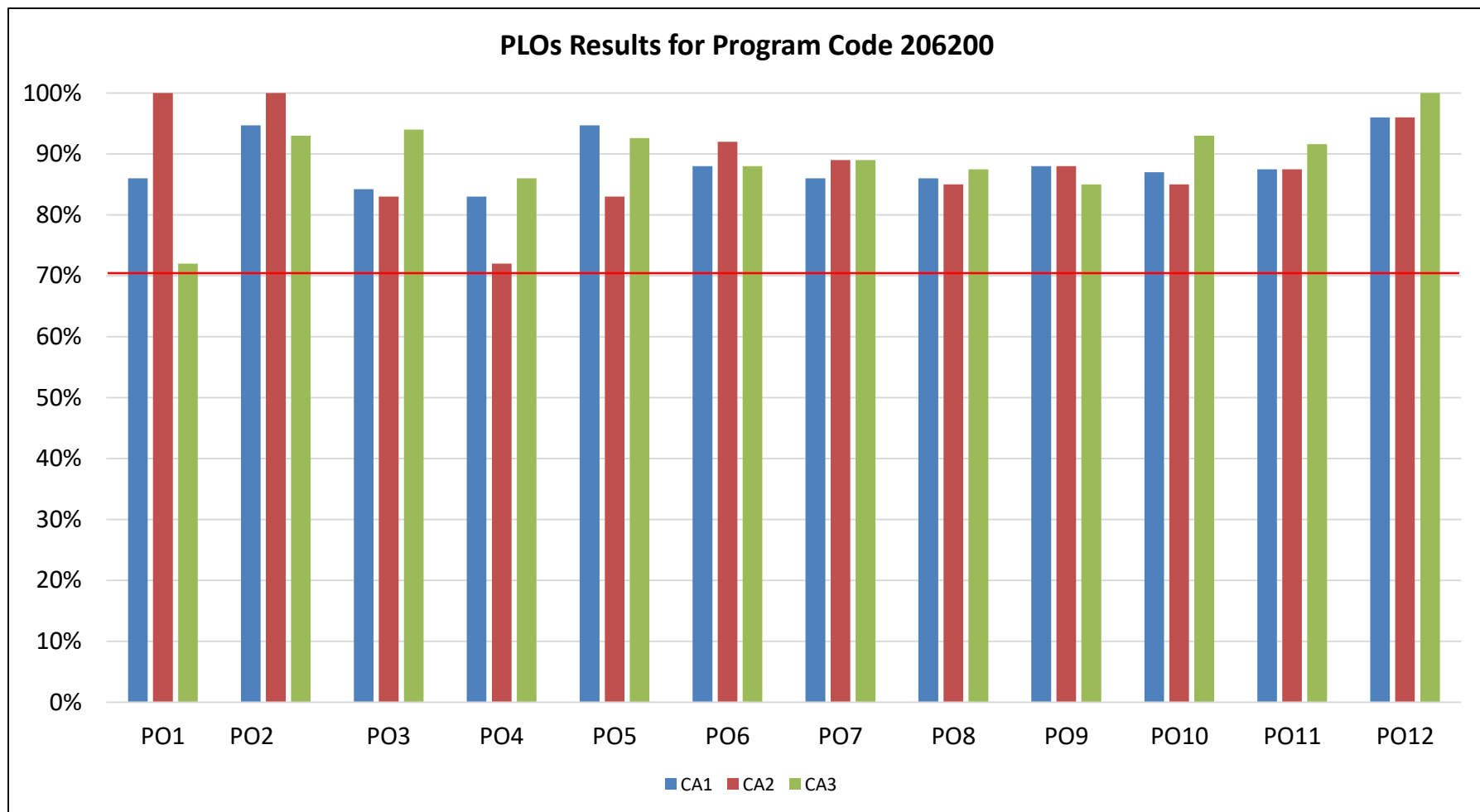
Program Learning Outcomes

AS Paralegal Studies (Legal Assisting) #206200

1. Communicate in a clear and effective manner.
2. Identify and apply ethical and professional standards of the paralegal profession.
3. Demonstrate ability to utilize the law library and electronic legal research to create well-written legal documents.
4. Apply knowledge of tort law, constitutional law, and criminal law concepts to analyze factual situations.
5. Demonstrate knowledge of all phases of litigation practice and procedure.
6. Examine real property law and its application to real property transactions.
7. Analyze issues related to estate planning and probate administration concepts and their application to probate procedures.
8. Identify the fundamental principles of the law of business organizations.
9. Explain how contract law and the Uniform Commercial Code impacts individuals and business entities.
10. Demonstrate knowledge of entrepreneurship, management techniques and procedures.
11. Analyze family law situations by applying family law and procedure.
12. Identify and demonstrate employability skills.

Program Learning Outcome Assessment Results – 2019-2020

AS Paralegal Studies (Legal Assisting) #206200

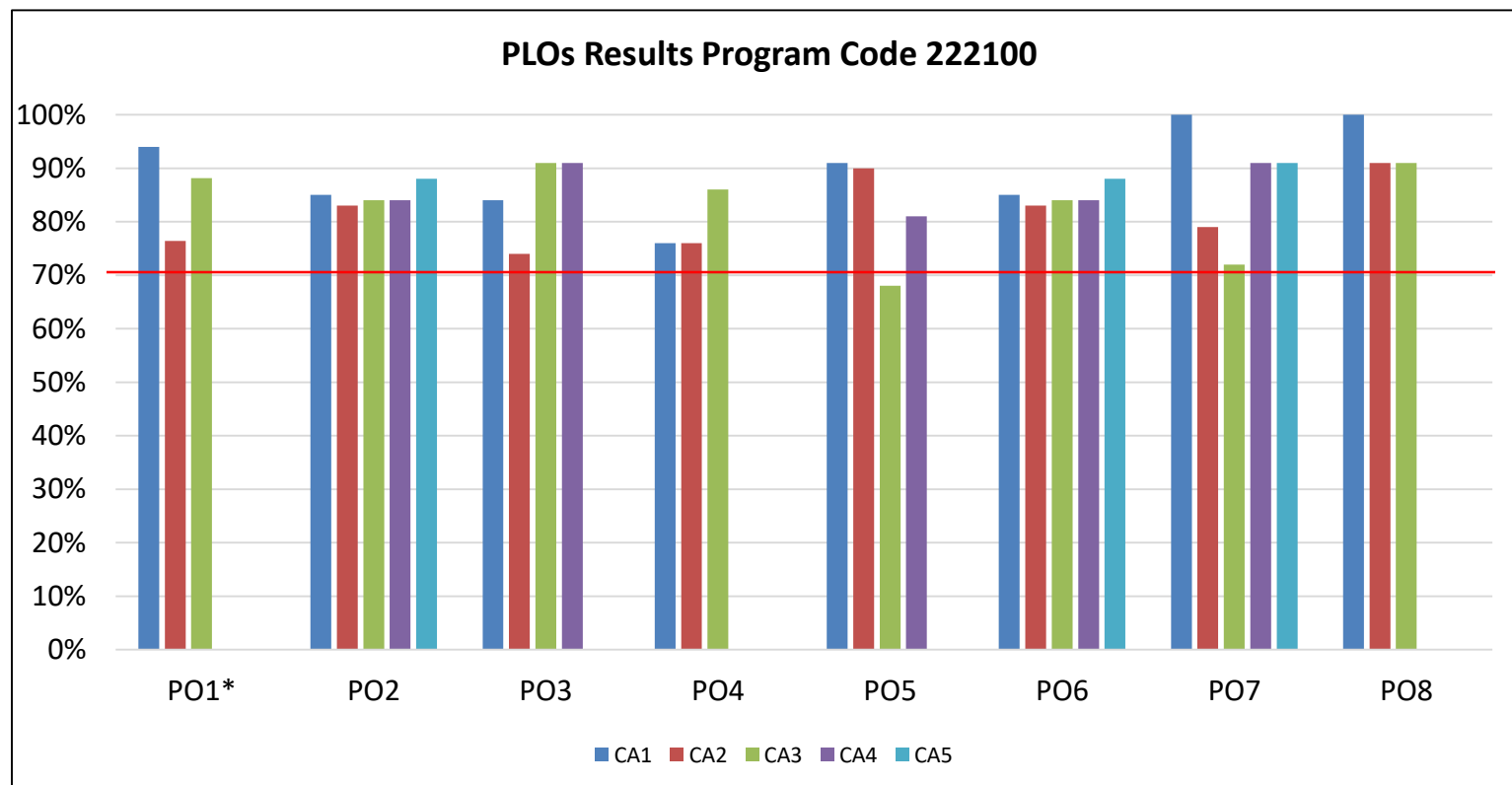


CA: Critical Assignment

Program Learning Outcome Assessment Results – 2019-2020

AS Industrial Management, code 222100

1. Prepare and use financial information to support decision making.
2. Generate effective communication of ideas, concepts and terminology.
3. Interpret and apply business related theories and technology to problems, cases, or research papers.
4. Utilize appropriate software and prepare applicable business documentation.
5. Formulate a marketing plan for a company that incorporates marketing concepts.
6. Develop a business plan for a new business venture.
7. Demonstrate proficiency in a technical field including theory, applications, troubleshooting and safety.
8. Demonstrate the ability to plan and initiate projects related to the field.



CA: Critical Assignment, *: Course completer

Program Learning Outcomes

AS Office Administration #222900

1. Communicate in a clear and effective manner.
2. Perform business computations, records and office management skills.
3. Perform keyboarding and document processing activities.
4. Demonstrate knowledge of human relation skills.
5. Demonstrate employability skills.
6. Perform information processing and transmittal activities.
7. Develop leadership skills.
8. Perform consumer purchasing activities.
9. Perform decision making activities.

Certificate Office Management #091400

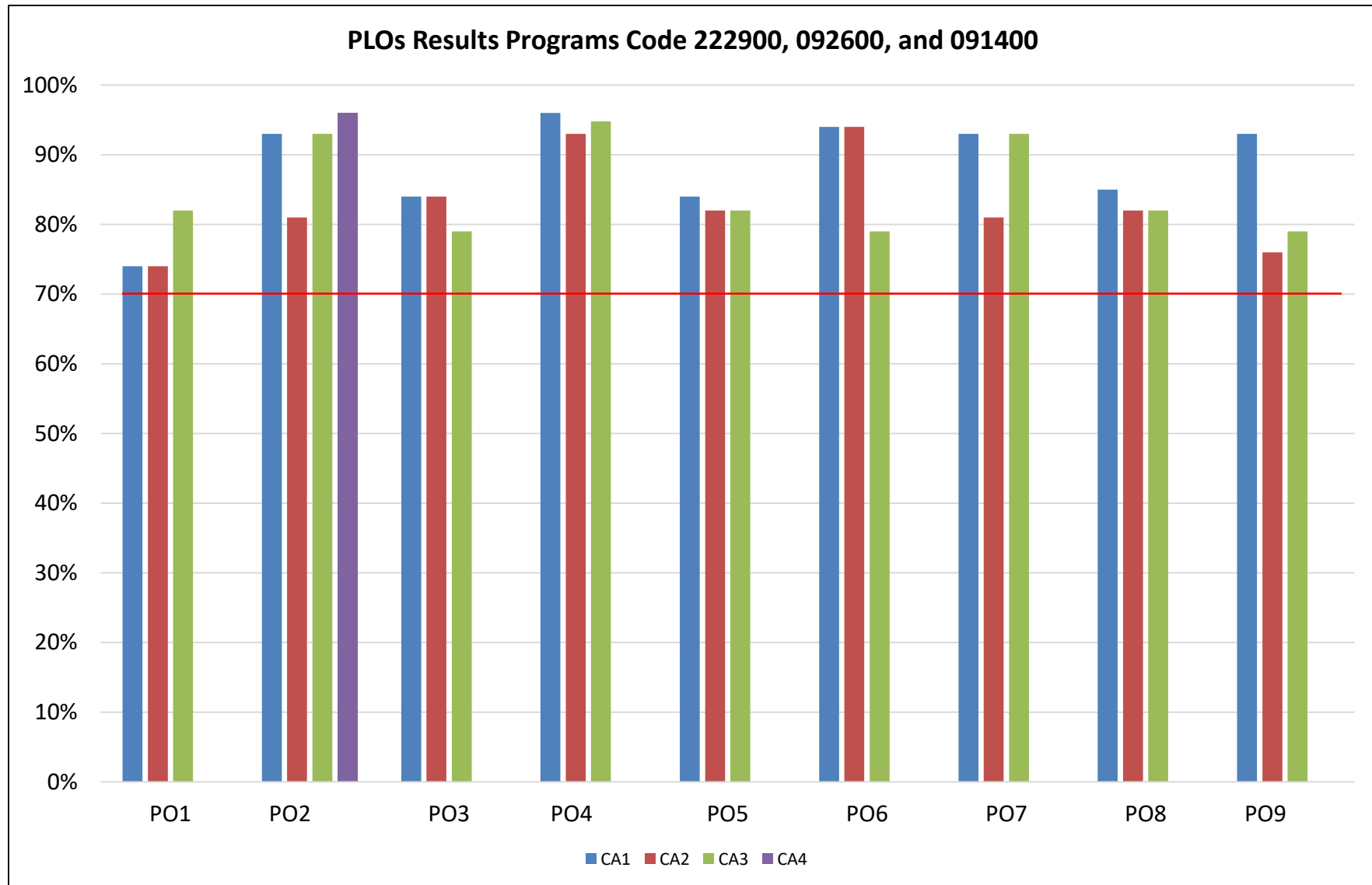
1. Communicate in a clear and effective manner.
2. Perform keyboarding and document processing activities.
3. Demonstrate knowledge of human relations skills.
4. Demonstrate employability skills.
5. Develop leadership skills.
6. Perform information processing and transmittal activities.
7. Perform decision-making activities as related to business software and the office environment.
8. Perform business computations, records and office management skills.

Program Learning Outcomes

Certificate Office Support (Technical) #092600

1. Communicate in a clear and effective manner.
2. Perform keyboarding and document processing activities.
3. Demonstrate knowledge of human relations.
4. Demonstrate employability skills.
5. Perform information processing and transmittal activities.
6. Perform decision-making activities as related to business software and the office environment.

Program Learning Outcome Assessment Results – 2019-2020



CA: Critical Assignment

Program Learning Outcomes

Broadcast TV Production A.S. #223300

1. Demonstrate effective written and oral communication skills.
2. Develop and produce a TV or video based project.
3. Direct a TV production, video production, or webcast.
4. Create a marketing and distribution plan.
5. Demonstrate team skills.
6. Operate studio and field video cameras.
7. Demonstrate knowledge of appropriate industry laws, regulations, trade terminology, and ethical practices.
8. Design and generate graphic elements.
9. Plan a production set and acquire appropriate production resources.
10. Create appropriate lighting for location and/or set productions.
11. Record, mix, and edit audio resources.
12. Operate control room equipment.
13. Organize and edit video resources.
14. Demonstrate safe and efficient work practices.

Program Learning Outcomes

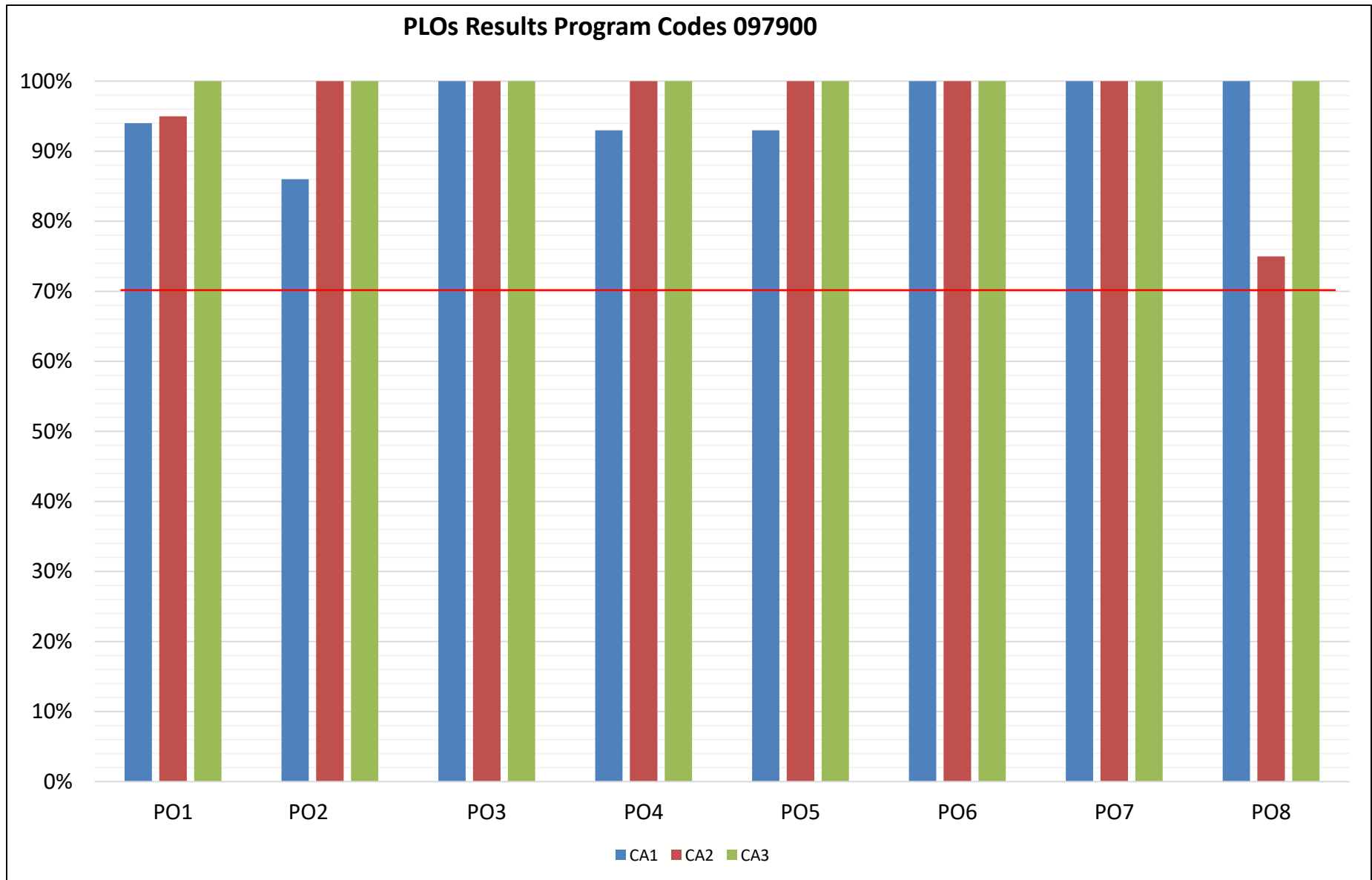
Television Studio Production Certificate #097900

1. Exhibit team skills.
2. Model safe and efficient work practices.
3. Create appropriate lighting for location and/or set productions.
4. Operate a video camera
5. Generate studio and/or location footage.
6. Record mix, and edit audio resources.
7. Use production control room equipment.
8. Organize and edit video resources

Broadcast TV Production Certificate #082400

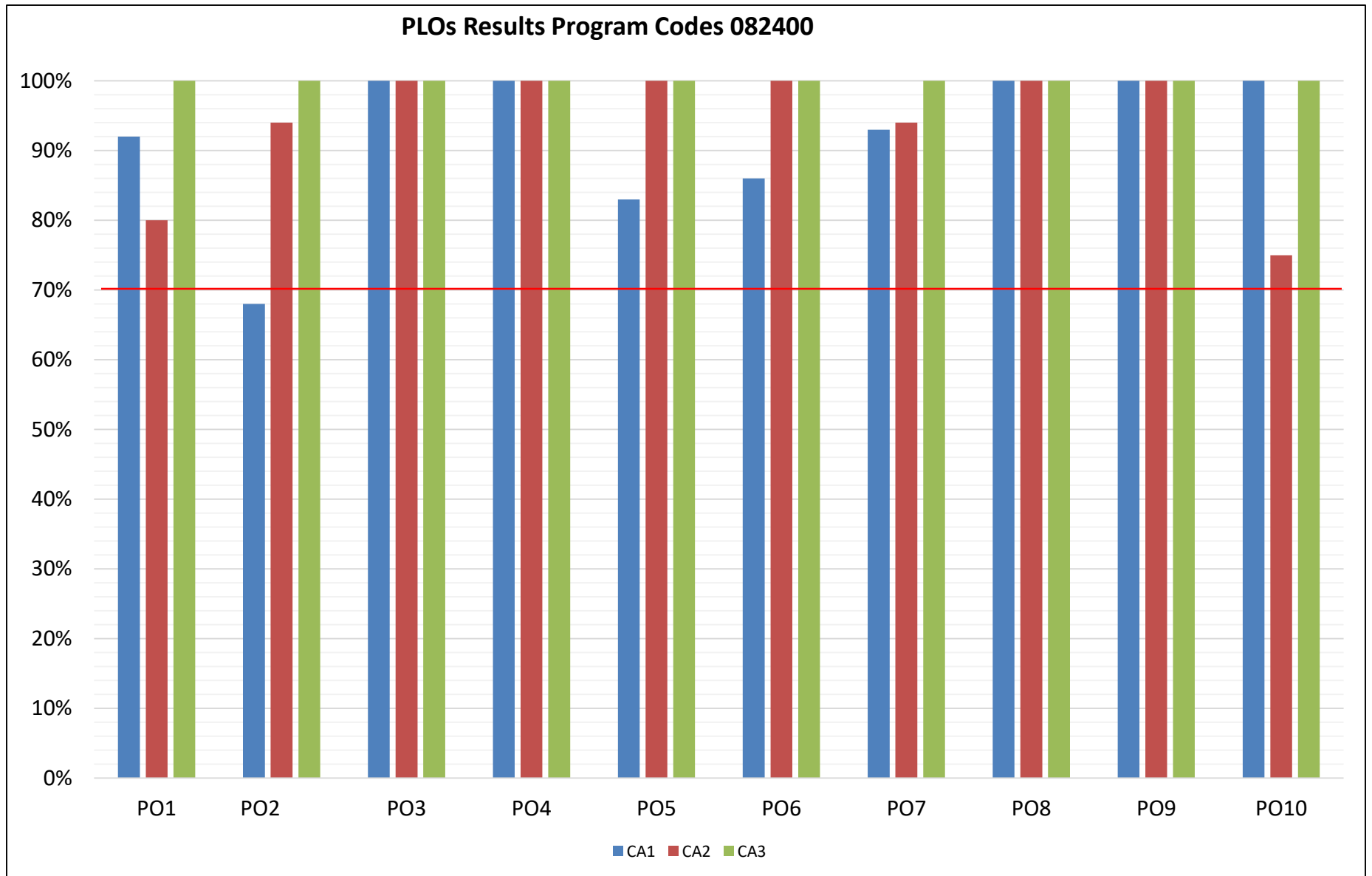
1. Demonstrate team skills.
2. Demonstrate safe and efficient work practices.
3. Generate a production schedule.
4. Plan a production set.
5. Create appropriate lighting for location and/or set productions.
6. Operate a video camera.
7. Shoot studio and/or location footage.
8. Record, mix, and edit audio resources.
9. Operate control room equipment.
10. Organize and edit video resources

Program Learning Outcome Assessment Results – 2019-2020



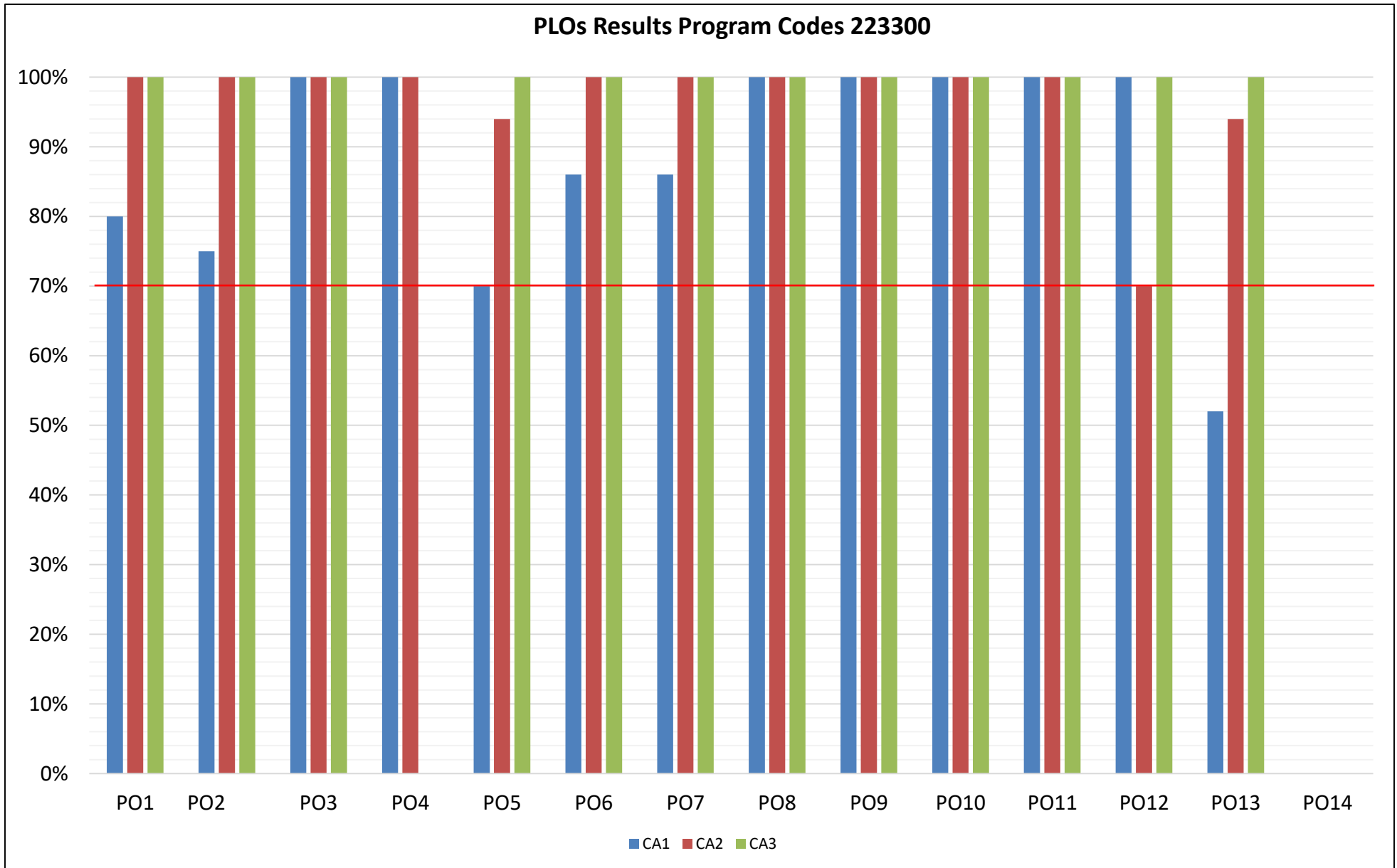
CA: Critical Assignment

Program Learning Outcome Assessment Results – 2019-2020



CA: Critical Assignment

Program Learning Outcome Assessment Results – 2019-2020



CA: Critical Assignment

PO4 Note: Marketing plans are currently assigned in two courses. A third learning activity will be added in RTV 2540 for the 2019-2020 academic year.

PO14 – No report

Assessment Data 2018-2019 and 2019-2020: Programs and Institutional Learning Outcomes

Program	Critical/ Creative Thinking		Communication		Cultural Literacy		Information & Technical Literacy	
	18/19	19/20	18/19	19/20	18/19	19/20	18/19	19/20
0817 - MARKETING, SALES, SER ENT	72%-91%	68%-91%	82%-94%	79%-89%	72%-91%	62.5%-90%	82%-94%	79%-89%
0913 - BUSINESS OPER/ENTREPREN.	72%-91%	68%-91%	86%-88%	84%-100%	72%-91%	68%-91%	79%-89%	71%-98%
0914 - OFFICE MANAGEMENT	81%-95%	88%-94%	88.8%-91.3%	82%	100%	96%-100%	79%-85%	79%-94%
0916 - BUSINESS MANAGEMENT	72%-91%	68%-91%	86%-88%	84%-100%	72%-91%	68%-91%	79%-89%	71%-98%
0926 - OFFICE SUPPORT-TECH. CER	81%-95%	88%-94%	88.8%-91.3%	82%	100%	96%-100%	79%-85%	79%-94%
0935 - ACCOUNTING OPER-TAX PREP	83%-91%	83%-91%	79%-89.5%	93.1%-97.6%	79%-85%	84%-91%	90%-91%	86%-100%
0943 - ACCOUNTING TECH MGMT	83%-91%	83%-91%	79%-89.5%	93.1%-97.6%	79%-85%	84%-91%	90%-91%	86%-100%
0979 - TELEVISION STUDIO PROD	100%	100%	40%-100%	58%-100%	100%	80%-100%	77%-100%	52%-100%
0824 - BROADCAST TV PROD	100%	100%	40%-100%	58%-100%	100%	80%-100%	77%-100%	52%-100%
2059 - BUSINESS ADMINISTRATION	72%-91%	68%-91%	86%-88%	84%-100%	72%-91%	68%-91%	79%-89%	71%-98%
2062 - PARALEGAL-LEGAL ASST	71.4%-91.6%	83.3%-100%	75%-91.6%	84%-100%	78.9%-94.7%	83%-94.7%	85.7%-100%	92%-100%
2084 - ACCOUNTING TECHNOLOGY	83%-91%	83%-91%	79%-89.5%	93.1%-97.6%	79%-85%	84%-91%	90%-91%	86%-100%
2221 - INDUSTRIAL MGMT TECH	72%-91%	68%-91%	85%-91%	83%-88%	72%-91%	68%-91%	81%-86%	76%
2229 - OFFICE ADMINISTRATION	81%-95%	88%-94%	88.8%-91.3%	82%	100%	96%-100%	79%-85%	79%-94%
2233 - BROADCAST TV PROD	100%	100%	40%-100%	58%-100%	100%	80%-100%	77%-100%	52%-100%

Headcount by Major

Major	2015-2016	2016-2017	2017-2018	2018-2019	2019-2020	
0817 - MARKETING, SALES, SER ENT	2	7	2	3	8	↑
0824 – BROADCAST TV PROD.		1	6	6	3	
0913 - BUSINESS OPER/ENTREPREN.	10	18	8	11	5	
0914 - OFFICE MANAGEMENT	19	10	12	10	16	↑
0916 - BUSINESS MANAGEMENT	36	84	46	57	54	
0926 - OFFICE SUPPORT-TECH. CER	1	11	1	3	3	
0935 - ACCOUNTING OPER-TAX PREP	6	13	4	5	7	↑
0943 - ACCOUNTING TECH MGMT	20	30	33	22	13	
0979 - TELEVISION STUDIO PROD	9	9	5	6	3	
2059 - BUSINESS ADMINISTRATION	332	315	322	326	289	
2062 - PARALEGAL-LEGAL ASST	139	122	97	89	98	↑
2084 - ACCOUNTING TECHNOLOGY	104	79	91	103	98	
2221 - INDUSTRIAL MGMT TECH	9	10	8	9	19	↑
2229 - OFFICE ADMINISTRATION	46	51	65	63	51	
2233 – BROADCAST TV PROD.			19	23	32	↑
Total	777	819	742	741	695	

Graduates

Major	2015-2016	2016-2017	2017-2018	2018-2019	2019-2020
0817 - MARKETING, SALES, SER ENT	8	8	34	2	16
0824 – BROADCAST TV PROD.				1	7
0913 - BUSINESS OPER/ENTREPREN.	39	55	52	3	68
0914 - OFFICE MANAGEMENT	13	4	25	5	9
0916 - BUSINESS MANAGEMENT	23		43	8	51
0919 - OFFICE MGMT-MEDICAL	2	3	4		
0926 - OFFICE SUPPORT-TECH. CER	24	3	26	1	5
0935 - ACCOUNTING OPER-TAX PREP	15	4	12		31
0943 - ACCOUNTING TECH MGMT	9	4	15	9	28
0979 - TELEVISION STUDIO PROD	11	10	10	4	15
2059 - BUSINESS ADMINISTRATION	20	26	21	26	27
2062 - PARALEGAL-LEGAL ASST	24	23	15	11	12
2084 - ACCOUNTING TECHNOLOGY	19	6	10	18	21
2221 - INDUSTRIAL MGMT TECH	4	2	1	1	4
2228 - OFFICE ADM-MED SYSTEMS	1	5	7	2	
2229 - OFFICE ADMINISTRATION	5	6	9	14	15
2233 – BROADCAST TV PROD.			1	2	3
Total	217	159	285	107	312

Blank cells or missing years indicate no graduates.

Source: IR Program Assessment Data

Number of Graduates by Race/Ethnicity (1 of 2)

Program	Year	Race/Ethnicity	
0817 - MARKETING, SALES, SER ENT	2018-19	White	2
		Black	1
	2019-20	Hispanic	3
		White	12
0824 – BROADCAST TV PROD.	2018-19	White	1
		Black	1
	2019-20	Hispanic	3
		White	3
0913 - BUSINESS OPER/ENTREPREN.	2018-19	Black	1
		Hispanic	1
		White	1
	2019-20	Asian	1
		Black	7
		Hispanic	11
		Native Hawaiian	1
		Two or More Races	5
		Unknown	1
		White	42
0914 - OFFICE MANAGEMENT	2018-19	Black	1
		Hispanic	1
		Two or More	1
		White	1
	2019-20	Black	1
		Hispanic	1
		White	7

Program	Year	Race/Ethnicity	
0916 - BUSINESS MANAGEMENT	2018-19	White	1
		Black	6
	2019-20	Hispanic	7
		Native Hawaiian	1
		Two or More Races	3
		Unknown	2
		White	32
0926 - OFFICE SUPPORT-TECH. CER	2018-19	Black	1
	2019-20	Hispanic	1
		Unknown	1
		White	3
0935 – Accounting Tech – Tax Cert	2019-20	Black	3
		Hispanic	4
		White	24
0943 - ACCOUNTING TECH MGMT	2018-19	Hispanic	1
		White	1
	2019-20	Black	3
		Hispanic	4
		White	21
0979 - TELEVISION STUDIO PROD	2018-19	Black	1
		White	1
	2019-20	Black	2
		Hispanic	4
		White	9



Number of Graduates by Race/Ethnicity (2 of 2)

Program	Year	Race/Ethnicity	
2059 - BUSINESS ADMINISTRATION	2018-19	Asian	3
		Black	3
		Hispanic	1
		White	19
	2019-20	Black	1
		Hispanic	7
		Native Hawaiian	1
		Two or More Races	2
		Unknown	2
		White	14
2062 - PARALEGAL-LEGAL ASST	2018-19	Black	1
		White	10
	2019-20	Hispanic	5
		White	7
2084 - ACCOUNTING TECHNOLOGY	2018-19	Black	3
		Hispanic	1
		White	14
	2019-20	Black	1
		Hispanic	4
		Two or More Races	1
		White	15

Program	Year	Race/Ethnicity	
2221 - INDUSTRIAL MGMT TECH	2018-19	Hispanic	1
	2019-20	Black	1
		White	3
2228 - OFFICE ADM-MED SYSTEMS	2018-19	Hispanic	1
		White	1
2229 - OFFICE ADMINISTRATION	2018-19	Black	4
		Hispanic	1
		Two or More Races	1
		Unknown	1
		White	7
	2019-20	Black	3
		Hispanic	2
		Unknown	1
		White	9
		White	9
2233 - BROADCAST TV PROD.	2018-19	Hispanic	1
		White	1
	2019-20	Hispanic	1
		White	2

Asian

Black

Hawaiian

Hispanic

Two or More Races

Unknown

White

Time to Degree

Major	Average of Yrs to Degree (2019-2020 cohort)
2059 - BUSINESS ADMINISTRATION	1.99
2062 - PARALEGAL-LEGAL ASST	2.22
2084 - ACCOUNTING TECHNOLOGY	1.95
2221 - INDUSTRIAL MGMT TECH	1.48
2229 - OFFICE ADMINISTRATION	3.58
2233 – BROADCAST TV PROD.	1.92

Graduation Rates (1 of 2)

Major	Fall Cohort Year	# in Cohort	150% Graduates	150% Graduation Rate	200% Graduates	200% Graduation Rate
2059- Business Administration	2014	140	9	6.4%	12	8.6%
	2015	104	10	9.6%	12	11.5%
	2016 – 200% In progress	136	21	15.4%	24	17.7%
	2017 – In progress	111	12	10.8%	12	10.8%
2062- Paralegal Studies	2014	30	8	26.7%	10	33.3%
	2015	35	12	34.3%	15	42.9%
	2016 – 200% In progress	38	8	21.1%	14	36.8%
	2017 – In progress	15	2	13.3%	2	13.3%
2084- Accounting Technology	2014	31	8	25.8%	10	32.3%
	2015	26	6	23.1%	7	26.9%
	2016 – 200% In progress	27	8	29.6%	8	29.6%
	2017 – In progress	28	7	25.0%	7	25.0%

Workforce Completion Rate for 150%: 34.28% and for 200%: 41.09%

Graduation Rates (2 of 2)

Major	Fall Cohort Year	# in Cohort	150% Graduates	150% Graduation Rate	200% Graduates	200% Graduation Rate
2221- Industrial Management	2014	6	1	16.7%	1	16.7%
	2015	1	0	0%	0	0%
	2016 – 200% In progress	3	0	0%	1	33.3%
	2017 – In progress	4	2	50.0%	2	50.0%
2228 - Office Administration- (Medical Systems Option)	2014	10	0	0%	1	10%
	2015	14	2	14.3%	3	21.4%
	2016 –200% In progress	6	3	50%	3	50%
2229- Office Administration (Gen, Leg, Med)	2014	21	4	19%	4	19%
	2015	8	4	50.0%	4	50.0%
	2016 – 200% In progress	8	5	62.5%	5	62.5%
	2017 – In progress	27	13	48.2%	13	48.2%
2229- Office Administration	2015	4	0	0%	0	0%
	2016 – 200% In progress	5	1	20.0%	1	20.0%
2233 – Broadcast TV Prod	2017 – In progress	13	5	38.5%	5	38.5%

Workforce Completion Rate for 150%: 34.28% and for 200%: 41.09%

Source: IR Program Assessment Data

Graduation Rates by Race/Ethnicity (1 of 3)

Major	Fall Cohort Year	Race/ Ethnicity	# in Cohort	150% Graduates	150% Graduation Rate	200% Graduates	200% Graduation Rate
2059- Business Administration	2015	Am. Ind	1	0	0%	0	0%
		Asian	3	0	0%	0	0%
		Black	14	1	7.1%	1	7.1%
		Hispanic	13	1	7.7%	1	7.7%
		Two or More Races	4	1	25%	1	25%
		Unknown	3	0	0%	0	0%
		White	66	7	10.6%	9	13.6%
	2016 – 200% In progress	Asian	2	0	0%	0	0%
		Black	33	2	6.1%	2	6.1%
		Hispanic	19	1	5.3%	1	5.3%
		Native Hawaiian/Pac	1	0	0%	1	100%
		Two or More Races	3	0	0%	0	0%
		White	78	18	23.8%	20	25.6%
	2017 – In progress	Asian	1	0	0%	0	0%
		Black	27	2	7.4%	2	7.4%
Hispanic		17	2	11.8%	2	11.8%	
Two or More Races		1	0	0%	0	0%	
White		65	8	12.3%	8	12.3%	
2062- Paralegal Studies	2015	Black	4	2	50%	2	50%
		Hispanic	2	0	0%	0	0%
		Unknown	1	1	100%	1	100%
		White	28	9	32.1%	12	42.9%
	2016 – 200% In progress	Black	6	3	50%	3	50%
		Hispanic	5	0	0%	2	40%
		White	27	5	18.5%	9	33.3%
	2017 – In progress	Black	3	0	0%	0	0%
		Hispanic	1	0	0%	0	0%
		White	11	2	18.2%	2	18.2%

Graduation Rates by Race/Ethnicity (2 of 3)

Major	Fall Cohort Year	Race/ Ethnicity	# in Cohort	150% Graduates	150% Graduation Rate	200% Graduates	200% Graduation Rate
2084- Accounting Technology	2015	Asian	1	0	0%	0	0%
		Black	3	1	33.3%	1	33.3%
		Hispanic	2	1	50%	1	50%
		Two or More Races	1	0	0%	0	0%
		White	19	4	21.1%	5	26.3%
	2016 – 200% In progress	Black	5	2	40%	2	40%
		Hispanic	4	1	25%	1	25%
		Two or More Races	1	0	0%	0	0%
		Unknown	1	1	100%	1	100%
		White	16	4	25%	4	25%
	2017 – In progress	Black	2	0	0%	0	0%
		Hispanic	5	1	20%	1	20%
		Two or More Races	1	0	0%	0	0%
		Unknown	1	0	0%	0	0%
		White	19	6	31.6%	6	31.6%
2221- Industrial Management	2015	White	1	0	0%	0	0%
	2016 – 200% In progress	Black	1	0	0%	0	0%
		White	2	0	0%	1	50%
	2017 – In progress	Black	1	0	0%	0	0%
		Hispanic	1	1	100%	1	100%
		White	2	1	50%	1	50%

Graduation Rates by Race/Ethnicity (3 of 3)

Major	Fall Cohort Year	Race/ Ethnicity	# in Cohort	150% Graduates	150% Graduation Rate	200% Graduates	200% Graduation Rate
2228 - Office Administration- (Medical Systems Option)	2015	Black	4	0	0%	0	0%
		Hispanic	1	0	0%	0	0%
		White	9	2	22.2%	3	33.3%
	2016 – 200% In progress	Black	1	0	0%	0	0%
		Hispanic	2	1	50%	1	50%
		White	3	2	66.7%	2	66.7%
2229- Office Administration (Gen, Leg, Med)	2015 – 200% in progress	Black	1	0	0%	0	0%
		White	7	4	57.1%	4	57.1%
	2016 – In progress	Black	2	1	50%	1	50%
		White	6	4	66.7%	4	66.7%
	2017- In progress	Black	3	0	0%	0	0%
		Hispanic	4	1	25%	1	25%
		Unknown	2	2	100%	2	100%
		White	18	10	55.6%	10	55.6%
	2229- Office Administration	2015	Black	1	0	0%	0
Hispanic			1	0	0%	0	0%
White			2	0	0%	0	0%
2016 – 200% In progress		Black	1	0	0%	0	0%
		Hispanic	1	0	0%	0	0%
		White	3	1	33.3%	1	33.3%
2233 – Broadcast TV Prod.	2017 – In progress	Black	3	0	0%	0	0%
		Hispanic	4	2	50%	2	50%
		Two or More Races	1	0	0%	0	0%
		White	5	3	60%	3	60%

Graduation Rates by Gender (1 of 2)

Major	Fall Cohort Year	Gender	# in Cohort	150% Graduates	150% Graduation Rate	200% Graduates	200% Graduation Rate
2059- Business Administration	2015	Female	53	4	7.6%	6	11.3%
		Male	49	6	12.2%	6	12.2%
		Unknown	2	0	0%	0	0%
	2016 – 200% In progress	Female	69	14	20.3%	16	23.2%
		Male	66	7	10.6%	8	12.1%
		Unknown	1	0	0%	0	0%
	2017 – in progress	Female	61	7	11.5%	7	11.5%
		Male	47	5	10.6%	5	10.6%
		PrefNoAns	1	0	0%	0	0%
		Unknown	2	0	0%	0	0%
2062- Paralegal Studies	2015	Female	29	9	31%	12	41.4%
		Male	4	2	50%	2	50%
		PrefNoAns	1	0	0%	0	0%
		Unknown	1	1	100%	1	100%
	2016 – 200% In progress	Female	34	8	24.2%	12	36.4%
		Male	4	0	0%	1	25%
		Unknown	1	0	0%	1	100%
	2017 – in progress	Female	14	2	14.3%	2	14.3%
Male		1	0	0%	0	0%	

Graduation Rates by Gender (2 of 2)

Major	Fall Cohort Year	Gender	# in Cohort	150% Graduates	150% Graduation Rate	200% Graduates	200% Graduation Rate
2084- Accounting Technology	2015	Female	22	6	27.3%	7	31.8%
		Male	4	0	0%	0	0%
	2016 – 200% In progress	Female	17	6	35.3%	6	35.3%
		Male	10	2	20%	2	20%
	2017 – in progress	Female	24	6	25%	6	25%
		Male	4	1	25%	1	25%
2221- Industrial Management	2015	Male	1	0	0%	0	0%
	2016 – 200% in progress	Male	3	0	0%	1	33.3%
		Female	1	1	100%	1	100%
	2017 – in progress	Male	3	1	33.3%	1	33.3%
2015		Female	14	2	14.3%	3	21.4%
	2016 – 200% In progress	Female	6	3	50%	3	50%
2229- Office Administration (Gen, Leg, Med)	2015	Female	8	4	50%	4	50%
		Female	3	2	66.7%	2	66.7%
	2016 – 200% in progress	Male	1	0	0%	0	0%
		PrefNoAns	2	1	50%	1	50%
		Unknown	2	2	100%	2	100%
	2017 – in progress	Female	24	12	50%	12	50%
		Male	2	1	50%	1	50%
		PrefNoAns	1	0	0%	0	0%
2229 – Office Administration	2015	Female	4	0	0%	0	0%
	2016 – 200% in progress	Female	5	1	20%	1	20%
2233 – Broadcast TV	2017 – In progress	Female	4	2	50%	2	50%
		Male	9	3	33.3%	3	33.3%

Retention Rates (1 of 2)

Program and Cohort Year		Registered	Exclusions	Adjusted Cohort	Retained by DSC		Retained by Program		DSC Total Retained
					N	%	N	%	
2059 BUSINESS ADMINISTRATION	2014	242	17	225	22	10%	68	31%	41%
	2015	205	4	201	4	2%	86	43%	45%
	2016	224	25	199	13	7%	77	39%	45%
	2017	212	19	193	15	7.8%	74	38.3%	46.1%
	2018	230	23	207	7	3.4%	106	51.2%	54.6%
2062 PARALEGAL-LEGAL ASST	2014	105	20	85	10	11.8%	39	46%	57.7%
	2015	109	20	89	7	8%	50	56%	64%
	2016	93	19	74	4	5%	39	53%	58%
	2017	64	16	48	3	6.3%	25	52.1%	58.3%
	2018	69	9	60	1	1.7%	38	63.3%	65%
2084 ACCOUNTING TECHNOLOGY	2014	71	12	59	9	21.4%	29	44%	65.7%
	2015	58	5	53	4	8%	26	49%	57%
	2016	60	5	55	1	2%	33	60%	62%
	2017	67	13	54	3	5.6%	30	55.6%	61.1%
	2018	72	16	56	0	0%	32	57.1%	57.1%

Registered - Includes all students enrolled in the fall term of the specified year, with the specified program as their primary major.

Exclusions - Includes students who are deceased or graduated fall of the specified year or the following spring or summer.

Not retained - Students who were not registered the following fall term.

Retained by DSC - Students who were still registered at DSC the following fall but with a different primary major.

Retained by Program - Students who were registered the following fall with the same primary major.

Source: IR Program Assessment Data

Retention Rates (2 of 2)

Program and Cohort Year		Registered	Exclusions	Adjusted Cohort	Retained by DSC		Retained by Program		DSC Total Retained
					N	%	N	%	
2221 INDUSTRIAL MGMT TECH	2014	9	0	9	0	0%	4	44%	44%
	2015	8	1	7	1	14%	5	71%	85%
	2016	7	2	5	0	0%	2	40%	40%
	2017	5	0	5	0	0%	4	80%	80%
	2018	6	2	4	1	25%	3	75%	100%
2228 OFFICE ADM-MED SYSTEMS	2014	26	2	24	3	16%	12	48%	64%
	2015	21	0	21	1	5%	10	48%	53%
	2016	27	6	21	1	5%	9	43%	48%
	2017	13	6	7	1	14.3%	2	28.6%	42.9%
2229 OFFICE ADMINISTRATION	2014	53	8	45	5	12.5%	18	42%	54%
	2015	33	2	31	2	6%	18	58%	64%
	2016	40	4	36	0	0%	22	61%	61%
	2017	52	11	41	2	4.9%	28	68.3%	73.2%
	2018	51	12	39	1	2.6%	19	48.7%	51.3%
2233 BROADCAST TV PROD.	2016	2	0	2	0	0%	2	100%	100%
	2017	14	0	14	0	0%	8	57.1%	57.1%
	2018	16	2	14	0	0%	9	64.3%	64.3%

Registered - Includes all students enrolled in the fall term of the specified year, with the specified program as their primary major.

Exclusions - Includes students who are deceased or graduated fall of the specified year or the following spring or summer.

Not retained - Students who were not registered the following fall term.

Retained by DSC - Students who were still registered at DSC the following fall but with a different primary major.

Retained by Program - Students who were registered the following fall with the same primary major.

Source: IR Program Assessment Data

Retention Rates by Race/Ethnicity (1 of 2)

Major	Fall Term	Race/Ethnicity	Registered	Exclusions	Adjusted Cohort	Retained by Program	
						N	%
2059 BUSINESS ADMINISTRATION	2017	Asian	4	0	4*	2	50.0%
		Black	47	3	44*	14	31.8%
		Hispanic	32	3	29	9	31.0%
		Two or More Races	4	0	4	2	50.0%
		Unknown	1	0	1	0	0.0%
		White	124	13	121*	47	42.3%
	2018	Am. Ind.	1	0	1	1	100.0%
		Asian	3	1	2	2	100.0%
		Black	39	3	36	17	47.2%
		Hispanic	34	1	33*	18	54.5%
		Native Hawaiian	1	0	1	1	100.0%
		Two or More Races	11	1	10	4	40.0%
		Unknown	3	0	3	2	66.7%
White	138	17	121*	61	50.4%		
2062 PARALEGAL-LEGAL ASST	2017	Am. Ind.	1	0	1	1	100.0%
		Black	9	3	6	2	33.3%
		Hispanic	8	1	7*	4	57.1%
		Two or More Races	2	0	2	1	50.0%
		Unknown	1	1	0		
		White	43	11	32*	17	53.1%
	2018	Am. Ind.	1	0	1	1	100.0%
		Black	9	1	8	4	50.0%
		Hispanic	11	0	11	7	63.6%
		Two or More Races	3	0	3	1	33.3%
White	45	8	37	25	67.6%		
2084 ACCOUNTING TECHNOLOGY	2017	Asian	2	0	2	2	100.0%
		Black	6	0	6	4	66.7%
		Hispanic	11	2	9*	4	44.4%
		Two or More Races	1	0	1	1	100.0%
		Unknown	3	2	1	0	0.0%
		White	44	9	35*	19	54.3%
	2018	Asian	3	0	3	1	33.3%
		Black	11	3	8	4	50.0%
		Hispanic	10	1	9	6	66.7%
		Two or More Races	4	1	3	0	0.0%
White	44	11	34	21	63.6%		

**one or more students retained by DSC*

Retention of Underserved Populations: 56.25% Black, 57.95% Hispanic, and 73.08% Unknown

Retention Rates by Race/Ethnicity (2 of 2)

Major	Fall Term	Race/Ethnicity	Registered	Exclusions	Adjusted Cohort	Retained by Program	
						N	%
2221 INDUSTRIAL MGMT TECH	2017	Black	2	0	2	1	50.0%
		Hispanic	1	0	1	1	100.0%
		White	2	0	2	2	100.0%
	2018	Black	1	0	1	1	100.0%
		Hispanic	1	1	0		
		White	4	1	3*	2	66.7%
2228 OFFICE ADM- MED SYSTEMS	2017	Black	1	0	1	0	0.0%
		Hispanic	3	2	1*	0	0.0%
		White	9	4	5	2	40.0%
2229 OFFICE ADMINISTRATION	2017	Black	7	2	5*	2	40.0%
		Hispanic	9	2	7	2	28.6%
		Two or More Races	1	0	1	1	100.0%
		Unknown	1	0	1	1	100.0%
		White	34	7	27*	22	81.5%
	2018	Black	10	4	6	1	16.7%
		Hispanic	2	0	2	0	0.0%
		Two or More Races	1	1	0		
		Unknown	3	1	2	2	100.0%
		White	35	6	29*	16	55.2%
2233 BROADCAST TV PROD.	2017	Black	3	0	3	1	33.3%
		Hispanic	4	0	4	2	50.0%
		Two or More Races	1	0	1	0	0.0%
		White	6	0	6	5	83.3%
	2018	Black	3	0	3	1	33.3%
		Hispanic	5	1	4	3	75.0%
		Unknown	1	0	1	0	0.0%
		White	7	1	6	5	83.3%

Retention of Underserved Populations: 56.25% Black, 57.95% Hispanic, and 73.08% Unknown

**one or more students retained by DSC*

Retention Rates by Gender (1 of 2)

Major	Fall Term	Gender	Registered	Exclusions	Adjusted Cohort	Retained by Program	
						N	%
2059 BUSINESS ADMINISTRATION	2017	Female	115	9	104*	45	42.5%
		Male	95	10	85*	29	34.1%
		Unknown	2	0	2	0	0.0%
	2018	Female	144	21	123*	60	48.8%
		Male	84	2	82*	45	54.9%
		PrefNoAns	2	0	2*	1	50.0%
2062 PARALEGAL-LEGAL ASST	2017	Female	60	16	44*	23	52.3%
		Male	4	0	4	2	50.0%
	2018	Female	59	9	50*	31	62.0%
		Male	9	0	9	6	66.7%
		PrefNoAns	1	0	1	1	100.0%
2084 ACCOUNTING TECHNOLOGY	2017	Female	55	11	44*	24	54.5%
		Male	12	2	10	6	60.0%
	2018	Female	57	14	43	27	62.8%
		Male	14	2	12	5	41.7%
		Unknown	1	0	1	0	0.0%
2221 INDUSTRIAL MGMT TECH	2017	Female	1	0	1	1	100.0%
		Male	4	0	4	3	75.0%
	2018	Female	1	1	0		
		Male	5	1	4*	3	75.0%

*some students retained by DSC

Source: IR Program Assessment Data

Retention Rates by Gender (2 of 2)

Major	Fall Term	Gender	Registered	Exclusions	Adjusted Cohort	Retained by Program	
						N	%
2228 OFFICE ADM-MED SYSTEMS	2017	Female	11	6	5*	2	40.0%
		Male	1	0	1	0	0.0%
		Unknown	1	0	1	0	0.0%
2229 OFFICE ADMINISTRATION	2017	Female	48	11	37*	24	64.9%
		Male	3	0	3	3	100.0%
		Unknown	1	0	1	1	100.0%
	2018	Female	44	9	35*	17	48.6%
		Male	5	1	4	2	50.0%
		PrefNoAns	1	1	0		
Unknown	1	1	0				
2233 BROADCAST TV PROD.	2017	Female	6	0	6	4	66.7%
		Male	8	0	8	4	50.0%
	2018	Female	7	1	6	5	83.3%
		Male	9	1	8	4	50.0%

*some students retained by DSC

Placement Rates
Workforce High Demand Occupations: 12.96%
DSC Workforce High Skill/High Wage Earnings: 59.10%

Program Title	Major	2014/15		2015/16		2016/17		2017/18		Average Annual Salary
		DSC%	FCS%	DSC%	FCS%	DSC%	FCS%	DSC%	FCS%	
MARKETING, SALES,SER ENT	0817	100%	97%	100%	93%	100%	94%	78%	85%	\$**,***
Broadcast Production	0824					New Program		50%	***%	\$**,***
BUSINESS OPER/ENTREPREN	0913	100%	100%	100%	100%	100%	100%	100%	100%	\$42,312
OFFICE MANAGEMENT	0914	100%	97%	100%	98%	100%	97%	100%	93%	\$**,***
BUSINESS MANAGEMENT	0916	100%	99%	100%	99%	100%	99%	95%	99%	\$38,984
OFFICE MGMT-MEDICAL	0919	100%	97%	100%	99%	100%	97%	100%	93%	\$**,***
OFFICE SUPPORT-TECH. CER	0926	100%	98%	100%	98%	100%	98%	100%	97%	\$31,028
ACCOUNTING OPER-TAX PREP	0935	86%	82%	***%	82%	100%	86%	***%	86%	\$**,***
ACCOUNTING TECH MGMT	0943	N/A	72%	N/A	N/A	100%	83%	***%	78%	\$**,***
TELEVISION STUDIO PROD	0979	82%	76%	100%	94%	88%	85%	50%	64%	\$**,***
BUSINESS ADMINISTRATION	2059	88%	95%	94%	95%	95%	94%	93%	95%	\$35,964
PARALEGAL-LEGAL ASST	2062	72%	78%	82%	82%	82%	80%	92%	85%	\$**,***
ACCOUNTING TECHNOLOGY	2084	50%	61%	***%	70%	33%	77%	60%	69%	\$**,***
		Revised Program						100%	93%	\$**,***
INDUSTRIAL MGMT TECH	2221	100%	84%	100%	98%	100%	70%	100%	94%	\$**,***
OFFICE ADM-MED SYSTEMS	2228	100%	99%	100%	97%	100%	97%	100%	95%	\$**,***
OFFICE ADMINISTRATION	2229	100%	99%	100%	97%	100%	97%	100%	95%	\$**,***
OFFICE ADMINISTRATION	2229	Revised Program						80%	93%	\$**,***

Source: Florida Education Training Placement Information Program (FETPIP)

*Currently Inactive Program

N/A - No placement data for the program

(***), (\$**,***), or (***%) - Number of graduates less than 10 but greater than 0 suppressed.

Indicates the College average above the State Averages
Indicates the College average same as the State Averages
Indicates the College average below the State Averages

Course Success Rates (1 of 3)

Major	Course	2016-2017		2017-2018		2018-2019		2019-2020	
		Attempted	% Successful	Attempted	% Successful	Attempted	% Successful	Attempted	% Successful
0979 TELEVISION STUDIO PROD	RTV1000C	29	86%	28	89%	38	89%	36	75%
	RVT1510C	15	93%	18	100%	24	88%	20	65%
	RVT1670	7	100%	4	100%	13	100%	5	100%
	RVT2241	5	100%	6	67%	8	88%	13	85%
	RTV2290			7	86%	3	100%	11	100%
	RTV2534			5	100%	5	100%	11	100%
	RTV2540			6	100%	5	100%	14	93%
	RVT2541C	13	92%	14	100%	13	92%	18	94%
	RTV2600C	22	91%	12	75%	7	100%	18	94%
	RTV2940			4	100%	3	100%	5	100%
	Major	91	91%	104	91%	119	92%	151	86%
2059 BUSINESS ADMINISTRAT ION	ECO2013	922	76%	917	76%	947	78%	861	83%
	ECO2023	712	77%	708	80%	565	83%	541	87%
	GEB1011	377	75%	363	79%	419	76%	457	81%
	GEB2351	297	77%	326	81%	349	78%	336	75%
	GEB2430	540	73%	448	71%	430	70%	385	81%
	ISM2000	427	70%	410	77%	396	71%	442	69%
	MAN2021	168	81%	184	85%	185	91%	192	76%
	MAR2011	130	78%	114	77%	140	86%	135	83%
	MAR2101	164	76%	162	82%	190	85%	213	78%
	MAR2321	67	75%	103	81%	87	80%	95	73%
	MKA2021			22	82%	21	86%	17	65%
	MNA2161	71	86%	77	95%	88	93%	97	82%
	MNA2345	56	91%	73	86%	62	89%	34	88%
	RMI2001							25	72%
	RMI2110							6	100%
	RMI2212							8	88%
	SBM2000	154	82%	151	82%	162	83%	158	82%
Major	4,088	76%	4,061	78%	4,041	79%	4,002	80%	

Indicates a success rate of 90% or higher

Indicates a success rate between 70% and 89%

Indicates a success rate below 70%

Course Success Rates (2 of 3)

Major	Course	2016-2017		2017-2018		2018-2019		2019-2020		
		Attempted	% Successful	Attempted	% Successful	Attempted	% Successful	Attempted	% Successful	
2062 PARALEGAL- LEGAL ASST	BUL2241	248	76%	259	78%	242	80%	285	83%	↑
	BUL2242	50	80%	39	87%	38	89%	48	88%	
	OST1141	144	88%	148	83%	100	84%	87	84%	↑
	OST1435	57	82%	55	91%	60	75%	64	81%	↑
	PLA1003	57	68%	47	77%	49	73%	76	71%	
	PLA1103	16	88%	18	83%	21	71%	23	96%	↑
	PLA1610	31	81%	21	86%	17	88%	27	89%	
	PLA1800	25	92%	26	85%	14	79%	24	92%	
	PLA2114	15	93%	15	100%	12	92%	17	94%	
	PLA2200	28	93%	18	83%	19	89%	18	83%	
	PLA2303	44	91%	26	92%	21	76%	38	84%	↑
	PLA2460	27	96%	20	75%	24	88%	19	84%	
	PLA2600	23	91%	24	88%	12	92%	18	100%	↑
	PLA2763	21	90%	30	80%	17	88%	14	93%	
	PLA2880	66	71%	52	81%	18	83%	30	87%	
PLA2949	5	100%	1	100%			1	100%		
	Major	857	82%	860	83%	664	81%	789	84%	↑
2084 ACCOUNTING TECHNOLOGY	ACG2021	538	62%	668	66%	618	68%	609	67%	
	ACG2071	267	73%	342	81%	381	85%	361	88%	↑
	APA1111	72	71%	60	82%	56	84%	48	83%	
	APA1121	36	92%	26	73%	45	87%	36	86%	
	APA1711	67	85%	70	76%	67	91%	93	91%	
	FIN1100	186	74%	180	72%	181	83%	188	77%	
	FIN2000	71	61%	70	69%	80	78%	79	87%	↑
	TAX2000	44	73%	52	81%	58	86%	38	87%	
	Major	1,281	69%	1,468	72%	1,486	78%	1,452	78%	

■ Indicates a success rate of 90% or higher
■ Indicates a success rate between 70% and 89%
■ Indicates a success rate below 70%

Course Success Rates (3 of 3)

Major	Course	2016-2017		2017-2018		2018-2019		2019-2020	
		Attempted	% Successful	Attempted	% Successful	Attempted	% Successful	Attempted	% Successful
2228 OFFICE ADM- MED SYSTEMS	OST2461	18	89%	20	95%	9	100%	3	100%
	Major	18	89%	20	95%	9	100%	3	100%
2229 OFFICE ADMINISTRATION	OST1100	59	73%	37	86%	42	79%	32	69%
	OST1110	26	92%	24	96%	21	81%	16	100%
	OST1330	50	80%	32	91%	26	88%	43	70%
	OST2336	34	91%	23	96%	22	73%	30	87%
	OST2401	70	84%	52	96%	43	91%	38	71%
	OST2431	34	91%	28	100%	17	100%	25	92%
	OST2501	35	94%	28	93%	21	76%	29	86%
	OST2713	15	100%	16	94%	21	100%	18	89%
	OST2828	19	89%	16	100%	7	86%	13	62%
	OST2852	22	91%	16	94%				
	QMB1001	104	70%	77	73%	68	74%	75	72%
	Major	468	82%	288	89%	288	83%	319	77%
Total	6,803	76%	6,801	78%	6,607	79%	6,716	80%	

■ Indicates a success rate of 90% or higher
■ Indicates a success rate between 70% and 89%
■ Indicates a success rate below 70%

Source: IR Program Assessment Data

Course Success Rates by Race/Ethnicity (1 of 7)

Program, Course & Race/Ethnicity	2018-2019		2019-2020	
	Attempted	% Successful	Attempted	% Successful
0979 - TV Studio Prod	119	92%	151	86%
RTV1000C	38	89%	36	75%
American Indian			1	100%
Asian			1	0%
Black	4	100%	5	60%
Hispanic/Latino	9	89%	11	73%
Unknown	1	0%	1	0%
White	22	91%	17	88%
RTV1510C	24	88%	20	65%
American Indian			1	0%
Black	3	100%	4	25%
Hispanic/Latino	4	75%	7	86%
White	17	88%	8	75%
RTV1670	13	100%	5	100%
Black	2	100%	1	100%
Hispanic/Latino	3	100%	1	100%
Two or More Races	1	100%	1	100%
White	7	100%	2	100%
RTV2241	8	88%	13	85%
Black	3	67%	2	50%
Hispanic/Latino	2	100%	4	75%
White	3	100%	7	100%
RTV2290	3	100%	11	100%
Hispanic/Latino	1	100%	3	100%
Two or More Races			1	100%
White	1	100%	7	100%
RTV2534	5	100%	11	100%
Black	1	100%	1	100%
Hispanic/Latino	1	100%	2	100%
Two or More Races			1	100%
White	3	100%	7	100%
RTV2540	5	100%	14	93%
Black	1	100%	2	100%
Hispanic/Latino	1	100%	2	100%
Two or More Races			1	0%
White	3	100%	9	100%

Program, Course & Race/Ethnicity	2018-2019		2019-2020	
	Attempted	% Successful	Attempted	% Successful
0979 - TV Studio Prod	119	92%	151	86%
RTV2541C	13	92%	18	94%
Black	3	100%	3	100%
Hispanic/Latino	1	100%	4	100%
White	9	89%	11	91%
RTV2600C	7	100%	18	94%
Black	3	100%	1	100%
Hispanic/Latino	1	100%	3	100%
Two or More Races			1	100%
White	3	100%	13	92%
RTV2940	3	100%	5	100%
Hispanic/Latino			1	100%
White	1	100%	4	100%
2059 - Business Administration	4041	79%	4002	80%
ECO2013	947	78%	861	83%
American Indian/Alas	1	100%	3	67%
Asian	30	87%	28	82%
Black	95	63%	80	80%
Hispanic/Latino	154	75%	126	80%
Native Hawaiian/Paci	1	100%	1	0%
Two or More Races	43	77%	34	71%
Unknown	18	94%	25	80%
White	605	81%	564	85%
ECO2023	565	83%	541	87%
Asian	10	90%	10	100%
Black	76	71%	58	78%
Hispanic/Latino	82	82%	85	87%
Two or More Races	17	94%	25	88%
Unknown	10	80%	14	100%
White	369	85%	349	88%

Course Success Rates by Race/Ethnicity (2 of 7)

Program, Course & Race/Ethnicity	2018-2019		2019-2020	
	Attempted	% Successful	Attempted	% Successful
2059 - Business Administration	4041	79%	4002	80%
GEB1011	419	76%	457	81%
Asian	5	40%	9	78%
Black	63	60%	74	73%
Hispanic/Latino	84	75%	71	85%
Two or More Races	17	59%	18	72%
Unknown	9	78%	6	83%
White	238	84%	279	82%
GEB2351	349	78%	336	75%
American Indian/Alas	1	0%	1	100%
Asian	11	73%	14	71%
Black	55	76%	51	71%
Hispanic/Latino	57	67%	62	73%
Native Hawaiian			2	50%
Two or More Races	16	56%	16	63%
Unknown	9	78%	5	100%
White	200	84%	185	78%
GEB2430	430	70%	385	81%
American Indian/Alas			1	100%
Asian	8	75%	6	83%
Black	77	58%	74	73%
Hispanic/Latino	66	71%	59	85%
Two or More Races	25	68%	13	85%
Unknown	12	42%	9	44%
White	241	74%	223	84%

Program, Course & Race/Ethnicity	2018-2019		2019-2020	
	Attempted	% Successful	Attempted	% Successful
2059 - Business Administration	4041	79%	4002	80%
ISM2000	396	71%	442	69%
Asian	6	50%	7	86%
Black	64	59%	80	59%
Hispanic/Latino	57	63%	75	67%
Two or More Races	14	64%	14	71%
Unknown	10	80%	7	57%
White	241	78%	259	73%
MAN2021	185	91%	192	76%
Asian	3	100%	7	71%
Black	20	75%	26	65%
Hispanic/Latino	25	88%	25	68%
Native Hawaiian/Paci	1	100%	1	100%
Two or More Races	3	67%	9	89%
Unknown	4	100%	4	50%
White	129	95%	120	80%
MAR2011	140	86%	135	83%
Asian	3	100%	3	100%
Black	20	85%	24	83%
Hispanic/Latino	15	80%	28	86%
Native Hawaiian/Paci			1	100%
Two or More Races	4	100%	6	83%
Unknown	2	100%	3	67%
White	96	85%	70	81%
MAR2101	190	85%	213	78%
Asian	2	100%	1	100%
Black	29	66%	38	79%
Hispanic/Latino	22	86%	32	78%
Two or More Races	10	90%	3	100%
Unknown	3	100%	3	33%
White	123	89%	136	79%

Course Success Rates by Race/Ethnicity (3 of 7)

Program, Course & Race/Ethnicity	2018-2019		2019-2020	
	Attempted	% Successful	Attempted	% Successful
2059 - Business Administration	4041	79%	4002	80%
MAR2321	87	80%	95	73%
Asian	2	50%	3	100%
Black	6	83%	15	73%
Hispanic/Latino	15	67%	16	56%
Two or More Races	3	67%	3	67%
Unknown	2	50%	2	50%
White	59	86%	56	77%
MKA2021	21	86%	17	65%
Black	4	25%	3	33%
Hispanic/Latino	3	100%	3	67%
Unknown	1	100%	2	50%
White	12	100%	9	78%
MNA2161	88	93%	97	82%
Black	14	86%	24	67%
Hispanic/Latino	9	100%	15	87%
Two or More Races	2	100%	3	100%
Unknown	1	100%	6	67%
White	62	94%	49	90%
MNA2345	62	89%	34	88%
Black	11	82%	6	100%
Hispanic/Latino	4	75%	1	100%
Two or More Races	1	100%	1	0%
White	43	91%	26	88%
RMI2001			25	72%
Black			7	71%
Hispanic/Latino			2	100%
Two or More Races			2	100%
White			14	64%
RMI2110			6	100%
Black			3	100%
Two or More Races			1	100%
White			2	100%
RMI2212			8	88%
Black			5	80%
White			3	100%

Program, Course & Race/Ethnicity	2018-2019		2019-2020	
	Attempted	% Successful	Attempted	% Successful
2059 - Business Administration	4041	79%	4002	80%
SBM2000	162	83%	158	82%
Asian	1	100%	2	100%
Black	30	60%	27	85%
Hispanic/Latino	22	91%	28	93%
Two or More Races	8	75%	5	100%
Unknown	4	75%	2	0%
White	95	91%	94	79%
2062 - Paralegal-Legal Asst	664	81%	789	84%
BUL2241	242	80%	285	83%
American Indian			1	100%
Asian	5	80%	7	57%
Black	32	66%	53	70%
Hispanic/Latino	36	81%	44	75%
Native Hawaiian/Paci	2	50%	2	100%
Two or More Races	10	70%	10	90%
Unknown	2	50%	3	67%
White	155	85%	165	90%
BUL2242	38	89%	48	88%
Asian	2	100%	1	100%
Black	3	100%	10	90%
Hispanic/Latino	4	100%	3	100%
Two or More Races	2	100%	4	75%
White	26	85%	30	87%
OST1141	100	84%	87	84%
Asian	3	100%	3	67%
Black	13	77%	12	58%
Hispanic/Latino	19	74%	20	85%
Two or More Races	6	100%	5	100%
Unknown			1	100%
White	59	86%	46	89%

Course Success Rates by Race/Ethnicity (4 of 7)

Program, Course & Race/Ethnicity	2018-2019		2019-2020		Program, Course & Race/Ethnicity	2018-2019		2019-2020	
	Attempted	% Successful	Attempted	% Successful		Attempted	% Successful	Attempted	% Successful
2062 - Paralegal-Legal Asst	664	81%	789	84%	2062 - Paralegal-Legal Asst	664	81%	789	84%
OST1435	60	75%	64	81%	PLA2114	12	92%	17	94%
Asian			1	100%	American Indian			1	100%
Black	10	50%	9	67%	Black	1	100%	1	0%
Hispanic/Latino	10	50%	8	88%	Hispanic/Latino	2	100%	5	100%
Native Hawaiian/Paci			1	100%	Two or More Races			1	100%
Two or More Races	2	100%	1	0%	White	9	89%	9	100%
Unknown	1	100%	2	100%	PLA2200	19	89%	18	83%
White	37	86%	42	83%	Black	1	100%	1	0%
PLA1003	49	73%	76	71%	Hispanic/Latino	3	100%	3	100%
Asian			1	100%	Two or More Races			1	100%
Black	6	67%	10	60%	White	14	86%	13	85%
Hispanic/Latino	10	50%	13	69%	PLA2303	21	76%	38	84%
Two or More Races	2	100%	1	0%	Asian			1	100%
White	29	79%	51	75%	Black	2	100%	5	80%
PLA1103	21	71%	23	96%	Hispanic/Latino	2	100%	8	75%
Black	1	100%	1	100%	Two or More Races	2	50%	2	100%
Hispanic/Latino	8	75%	1	0%	White	15	73%	22	86%
White	10	60%	21	100%	PLA2460	24	88%	19	84%
PLA1610	17	88%	27	89%	Asian			1	100%
Black	2	100%	2	100%	Black	3	67%	2	100%
Hispanic/Latino	2	100%	7	100%	Hispanic/Latino	3	100%	2	100%
Two or More Races			1	100%	Two or More Races	1	100%	1	100%
White	12	83%	17	82%	White	16	88%	13	77%
PLA1800	14	79%	24	92%	PLA2600	12	92%	18	100%
Black	1	100%	2	100%	Black	2	100%	2	100%
Hispanic/Latino	6	83%	1	100%	Hispanic/Latino	3	100%	3	100%
Two or More Races			1	100%	Two or More Races	1	100%	1	100%
White	6	67%	20	90%	White	5	80%	12	100%
					PLA2763	17	88%	14	93%
					Hispanic/Latino	2	100%	7	100%
					White	13	85%	7	86%

■ Indicates a success rate of 90% or higher
■ Indicates a success rate between 70% and 89%
■ Indicates a success rate below 70%

Source: IR Program Assessment Data

Course Success Rates by Race/Ethnicity (5 of 7)

Program, Course & Race/Ethnicity	2018-2019		2019-2020	
	Attempted	% Successful	Attempted	% Successful
2062 - Paralegal-Legal Asst	664	81%	789	84%
PLA2880	18	83%	30	87%
Black	2	100%	3	100%
Hispanic/Latino	5	80%	6	67%
Two or More Races	2	50%	1	0%
White	9	89%	20	95%
PLA2949			1	100%
White			1	100%
2084 - Accounting Tech	1486	78%	1452	78%
ACG2021	618	68%	609	67%
American Indian/Alas	2	50%	1	100%
Asian	20	90%	15	87%
Black	57	44%	57	47%
Hispanic/Latino	79	61%	120	67%
Native Hawaiian/Paci	2	0%	2	50%
Two or More Races	23	39%	27	74%
Unknown	15	67%	18	56%
White	420	73%	369	70%
ACG2071	381	85%	361	88%
American Indian/Alas	1	100%	1	100%
Asian	21	90%	6	100%
Black	26	73%	25	68%
Hispanic/Latino	43	84%	75	87%
Native Hawaiian/Paci			1	100%
Two or More Races	9	78%	10	100%
Unknown	9	78%	10	100%
White	272	86%	233	89%
APA1111	56	84%	48	83%
Asian	1	100%	1	100%
Black	6	83%	4	75%
Hispanic/Latino	9	89%	10	60%
Two or More Races	2	50%	1	100%
White	38	84%	32	91%

Program, Course & Race/Ethnicity	2018-2019		2019-2020	
	Attempted	% Successful	Attempted	% Successful
2084 - Accounting Tech	1486	78%	1452	78%
APA1121	45	87%	36	86%
Black	5	80%	7	57%
Hispanic/Latino	6	67%	8	88%
Two or More Races	3	67%	2	50%
White	29	97%	19	100%
APA1711	67	91%	93	91%
Asian	2	50%	3	67%
Black	8	100%	10	80%
Hispanic/Latino	4	75%	18	94%
Two or More Races	2	100%	2	100%
Unknown	1	100%	2	100%
White	50	92%	58	93%
FIN1100	181	83%	188	77%
American Indian/Alas			1	100%
Asian	2	50%	4	75%
Black	25	60%	28	71%
Hispanic/Latino	28	71%	33	73%
Two or More Races	5	100%	4	75%
Unknown	1	100%	1	100%
White	119	90%	117	79%
FIN2000	80	78%	79	87%
Asian	3	100%	2	100%
Black	18	72%	15	73%
Hispanic/Latino	11	73%	9	78%
Two or More Races	4	50%	1	100%
Unknown	1	100%	1	100%
White	43	81%	51	92%

■ Indicates a success rate of 90% or higher
■ Indicates a success rate between 70% and 89%
■ Indicates a success rate below 70%

Source: IR Program Assessment Data

Course Success Rates by Race/Ethnicity (6 of 7)

Program, Course & Race/Ethnicity	2018-2019		2019-2020	
	Attempted	% Successful	Attempted	% Successful
2084 - Accounting Tech	1486	78%	1452	78%
TAX2000	58	86%	38	87%
Asian	1	100%	2	100%
Black	14	86%	6	100%
Hispanic/Latino	4	100%	7	57%
Two or More Races			1	100%
White	39	85%	22	91%
2228 - Office Adm-Med Systems	9	100%	3	100%
OST2461	9	100%	3	100%
Black	1	100%	1	100%
Unknown			1	100%
White	7	100%	1	100%
2229 - Office Admin	288	83%	319	77%
OST1100	42	79%	32	69%
Black	9	78%	3	33%
Hispanic/Latino	3	67%	5	60%
Two or More Races	1	100%	1	100%
Unknown	3	33%	1	100%
White	26	85%	22	73%
OST1110	21	81%	16	100%
Black	4	75%	2	100%
Hispanic/Latino	3	33%	1	100%
Two or More Races	2	100%	1	100%
White	12	92%	12	100%
OST1330	26	88%	43	70%
Black	5	100%	6	50%
Hispanic/Latino	1	100%	10	80%
Two or More Races	2	100%	1	100%
Unknown	2	50%	1	100%
White	16	88%	25	68%

Program, Course & Race/Ethnicity	2018-2019		2019-2020	
	Attempted	% Successful	Attempted	% Successful
2229 - Office Admin	288	83%	319	77%
OST2336	22	73%	30	87%
Asian			1	100%
Black	6	33%	5	60%
Hispanic			5	80%
Two or More Races	1	100%	1	100%
White	15	87%	18	94%
OST2401	43	91%	38	71%
Black	9	78%	6	50%
Hispanic/Latino	4	100%	7	86%
Two or More Races			1	100%
Unknown	2	50%	1	100%
White	28	96%	23	70%
OST2431	17	100%	25	92%
Black	2	100%	1	100%
Hispanic/Latino	3	100%	5	80%
Native Hawaiian			1	100%
Two or More Races			1	100%
Two or More Races	1	100%	1	100%
White	11	100%	16	94%
OST2501	21	76%	29	86%
Black	7	43%	3	67%
Hispanic/Latino			3	67%
Two or More Races	1	100%	1	100%
Unknown	1	100%	1	100%
White	12	92%	21	90%
OST2713	21	100%	18	89%
Black	3	100%	4	75%
Hispanic/Latino	1	100%	2	50%
Unknown	1	100%	1	100%
White	14	100%	11	100%
OST2828	7	86%	13	62%
Black	2	50%	2	100%
Hispanic/Latino			2	0%
White	5	100%	9	67%

■ Indicates a success rate of 90% or higher
■ Indicates a success rate between 70% and 89%
■ Indicates a success rate below 70%

Source: IR Program Assessment Data

Course Success Rates by Race/Ethnicity (7 of 7)

Program, Course & Race/Ethnicity	2018-2019		2019-2020	
	Attempted	% Successful	Attempted	% Successful
2229 - Office Administration	288	83%	319	77%
QMB1001	68	74%	75	72%
Asian			4	75%
Black	12	58%	10	40%
Hispanic/Latino	9	89%	12	67%
Two or More Races	2	50%	2	50%
White	45	76%	47	81%
Grand Total	6607	79%	6716	80%

■ Indicates a success rate of 90% or higher
■ Indicates a success rate between 70% and 89%
■ Indicates a success rate below 70%

Overall Success Rates by Program and Race/Ethnicity

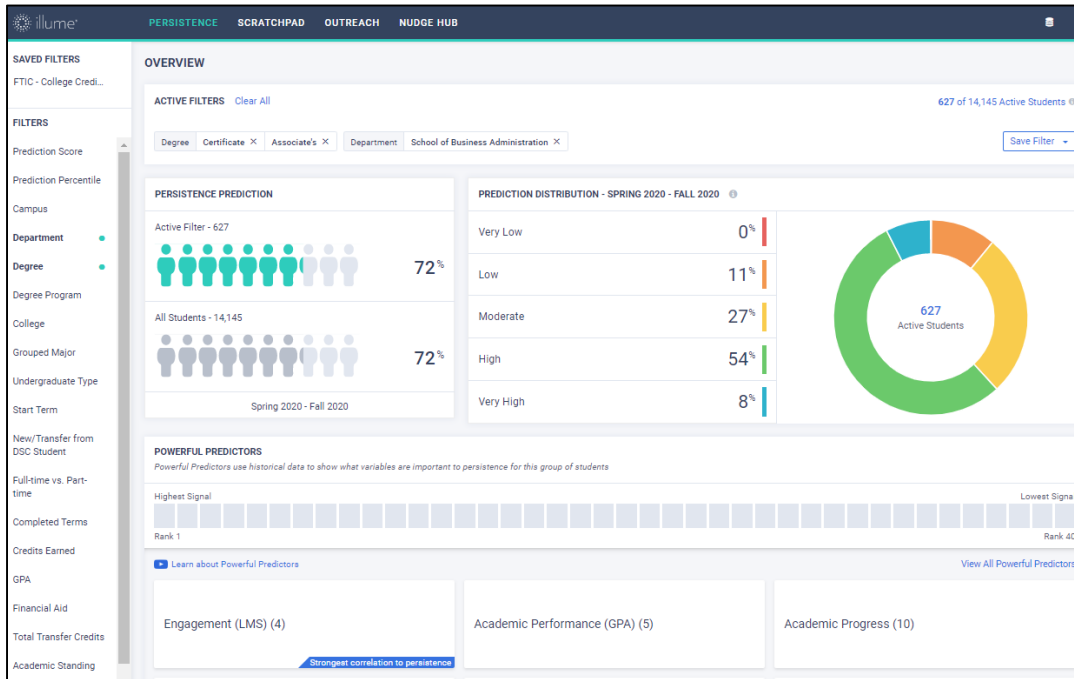
Program, Course & Race/Ethnicity	2019-2020	
	Attempted	% Successful
0979 - Television Studio Production	151	86%
American Indian/Alas	2	50%
Asian	1	0%
Black	19	68%
Hispanic/Latino	38	87%
Two or More Races	5	80%
Unknown	1	0%
White	85	93%
2059 - Business Administration	4002	80%
American Indian/Alas	5	80%
Asian	90	83%
Black	595	73%
Hispanic/Latino	628	79%
Native Hawaiian/Paci	5	60%
Two or More Races	153	78%
Unknown	88	72%
White	2438	82%
2062 - Paralegal-Legal Assistant	789	84%
American Indian/Alas	2	100%
Asian	15	73%
Black	113	72%
Hispanic/Latino	131	82%
Native Hawaiian/Paci	3	100%
Two or More Races	30	83%
Unknown	6	83%
White	489	88%

Program, Course & Race/Ethnicity	2019-2020	
	Attempted	% Successful
2084 - Accounting Technology	1452	78%
American Indian/Alas	3	100%
Asian	33	88%
Black	152	63%
Hispanic/Latino	280	75%
Native Hawaiian/Paci	3	67%
Two or More Races	48	81%
Unknown	32	75%
White	901	81%
2228 - Office Administration-Med Systems	3	100%
Black	1	100%
Unknown	1	100%
White	1	100%
2229 - Office Administration	319	77%
Asian	5	80%
Black	42	57%
Hispanic/Latino	52	71%
Native Hawaiian/Paci	1	100%
Two or More Races	8	88%
Unknown	7	100%
White	204	82%
Grand Total	6716	80%

■ Indicates a success rate of 90% or higher
■ Indicates a success rate between 70% and 89%
■ Indicates a success rate below 70%

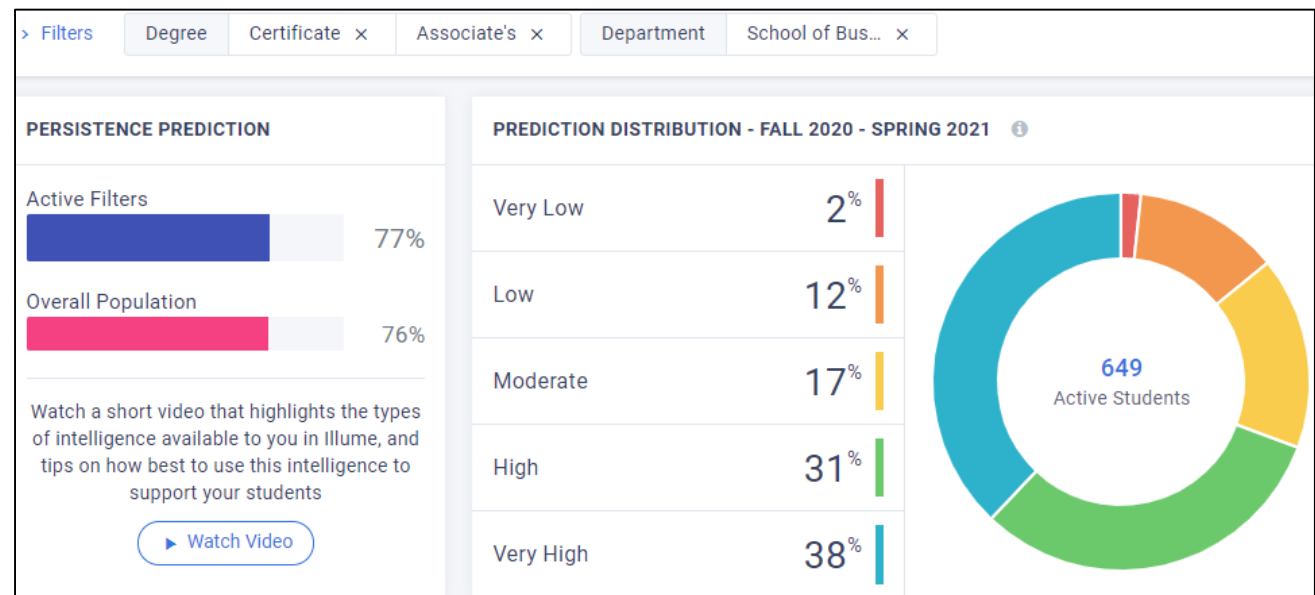
Source: IR Program Assessment Data

Civitas – illum Students

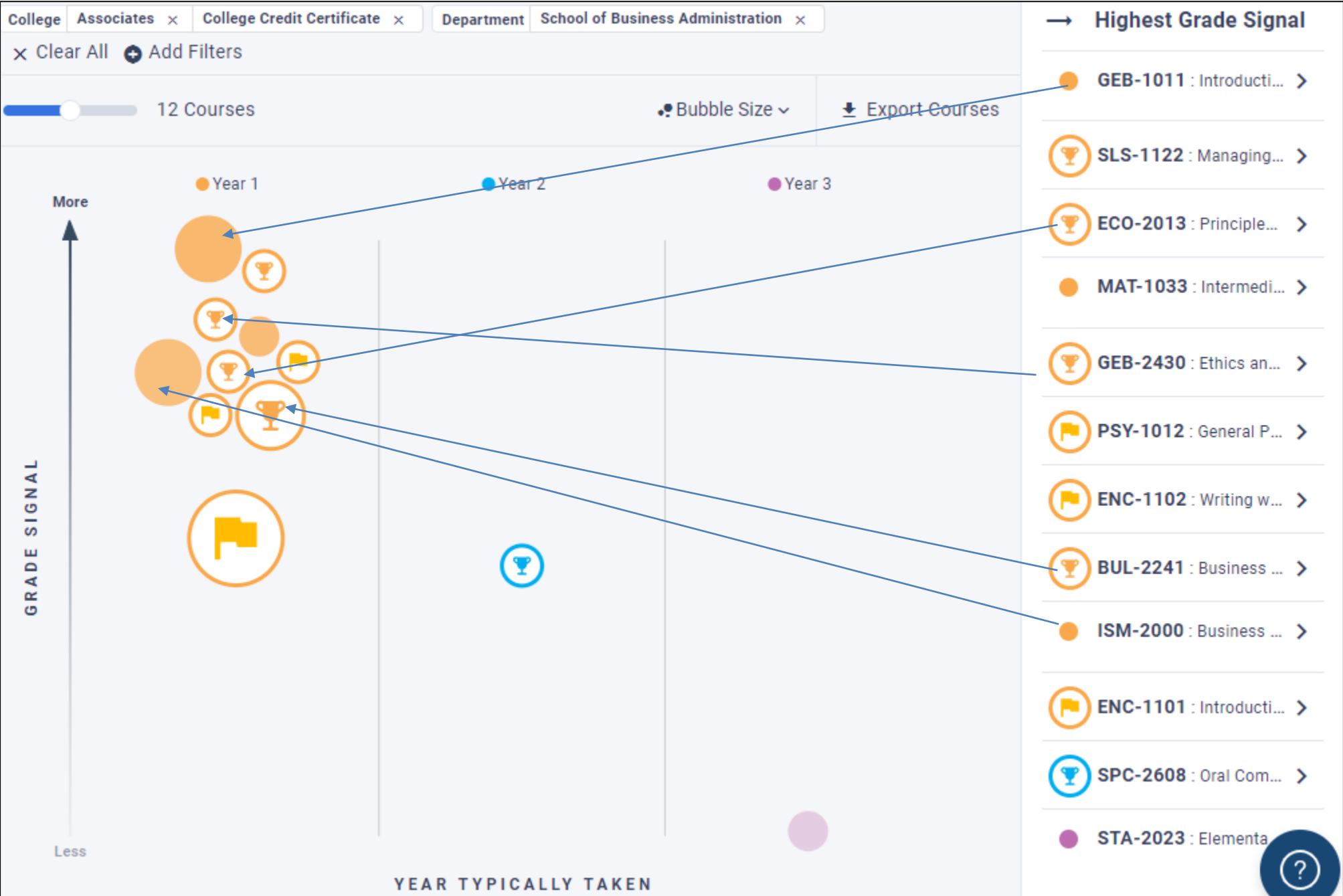


Captured on 1/28/20

Captured on 11/11/20



Civitas – illumine Courses





2020-2021

Academic Affairs

Assessment Day – Program Guides

*A Review of Program Guide and Course Catalog
Information*

Program Guides - Overview

- Given Assessment Day results, are there any changes needed to or desired for the Program Guide?
- Please Review:
 - Program Information
 - General Education Course Selections (if applicable)
 - Program Course Catalog Information
 - Program of Study

Program Guides – Information Review

- Mission statement
 - Does it accurately state the purpose and goals of the program?
- Description
 - Does it clearly portray the nature of the program and any unique characteristics (i.e. embedded certificates, industry certifications, program accreditations, etc.)?

Program Guides – General Ed. Review

- General Education Courses *(if applicable)*
 - Are the selection of courses aligned with the academic knowledge students need to be successful in the related field(s)/occupations?
 - Must be a minimum of 15 credit hours for A.S. programs
(F.A.C. [6A-10.024](#))
 - Must include ENC1101 and a Math Core course
 - Do the selection of courses allow for seamless transition to the Baccalaureate level (if applicable)?

Program Guides – Course Reqs. Review

- Program Specific Course Requirements
 - Are the courses relevant to the academic and technical skills required in the related field(s)/occupation(s)?
 - Are there any required courses offered by another department? If so, consult with that department on upcoming changes (if any).
 - Are there any courses that have not been offered in over 5 years?

Program Guides – Course Info. Review

- Program Specific Course Catalog Information
 - Is the course description accurate?
 - Are the course prefix, number and/or title relevant?
 - Are the term offerings up-to-date?
 - Are the prerequisite and corequisite course assignments appropriate to what students need to know to be successful in the requisite (*required*) course?

Program Guide – Program of Study Review

- Program of Study
 - Is the sequence of courses structured from foundational to advanced content, as appropriate?
 - Does the sequence align with course, term offerings?
 - Does the sequence align with course, prerequisite/co-requisite assignments?
 - Are there any special notes/information missing, incorrect or desired?